

User manual

Dashboard for Windows V1.3.x

TBS Electronics BV
De Marowijne 3
1689 AR Zwaag
The Netherlands

www.tbs-electronics.com

COPYRIGHT © 2012 (rev4e)



TABLE OF CONTENTS

- 1 INTRODUCTION..... 4**
- 2 INSTALLING DASHBOARD..... 5**
 - 2.1 Getting started with the Dashboard software..... 5
- 3 EXPLAINING THE DASHBOARD ENVIRONMENT 6**
 - 3.1 The Menu bar..... 6
 - 3.1.1 Menu bar – File..... 7
 - 3.1.2 Menu bar – View..... 7
 - 3.1.3 Menu bar – ‘Device name’ (e.g. ‘e-xpert pro’ or ‘OC12-60’) 7
 - 3.1.4 Menu bar – Tools..... 9
 - 3.1.5 Menu bar – Window..... 9
 - 3.1.6 Menu bar – Help..... 9
- 4 BATTERY MONITOR CONTROL10**
 - 4.1 Battery monitor display panel10
 - 4.2 Battery monitor status10
 - 4.3 Battery monitor history11
 - 4.3.1 The Battery tab.....12
 - 4.3.2 The Alarms tab13
 - 4.4 Battery monitor setup14
 - 4.4.1 The General tab.....14
 - 4.4.2 The Main Battery Alarms tab15
 - 4.4.3 The Aux. Battery Alarms tab17
 - 4.4.4 The Battery tab.....18
 - 4.4.5 The Monitor Display tab19
 - 4.4.6 The Monitor Processing tab20
- 5 OMNICHARGE CONTROL.....23**
 - 5.1 Omnicharge display panel.....23
 - 5.2 Omnicharge setup.....23
 - 5.2.1 The General tab.....23
 - 5.2.2 The Alarms tab24
- 6 POWERSINE COMBI CONTROL27**
 - 6.1 Powersine Combi display panel27
 - 6.2 Powersine Combi setup28
 - 6.2.1 The General tab.....28
 - 6.2.2 The Inverter tab29



6.2.3	The Charger tab.....	31
6.2.4	The Transfer Switch tab.....	33
6.2.5	The Trigger-Action tab	35
6.3	Powersine display panel.....	44
7	CHARGE PROGRAM EDITOR.....	45
7.1	The General tab	45
7.2	The Soft Start tab	47
7.3	The Bulk tab	49
7.4	The Ext. Bulk tab	51
7.5	The Absorption tab	53
7.6	The Analyze tab	55
7.7	The Float tab	57
7.8	The Pulse tab	58
7.9	The Equalize tab	60
7.10	The Stop tab	62
7.11	The Error tab	64
8	END USER LICENSE AGREEMENT.....	66



1 INTRODUCTION

Thank you for using Dashboard for Windows. Dashboard is a comprehensive software platform, intended for configuration and readout of TBSLink enabled products from TBS Electronics. It also offers a data logging feature capable of logging all available parameters from your TBS product, for further analysis in for example Microsoft Excel. Dashboard shall evolve continuously with the addition of new features and support for future products.

Currently, the following TBS products are supported:

- e-xpert pro(-hv) and e-xpert 501 battery monitors
- Omnicharge OC20-60 programmable automatic battery chargers
- Powersine Combi PSC1600-PSC1800 professional inverter-charger series
- Powersine PS1000-PS1800 professional inverter series

These TBS products must be connected to your Windows PC by either a USB or RS232 Communication kit (e-xpert series), or a USB to TBSLink Communication kit (Powersine, Powersine Combi and Omnicharge series).



2 INSTALLING DASHBOARD

For information on the physical connections between the TBS product, the interface box and the PC, please consult the installation guides that are supplied along with all TBS products.

If you connect to your PC using USB, please make sure that you only connect the USB cable to your PC after Dashboard is completely installed.

Dashboard for Windows is compatible with Windows XP, Windows Vista and Windows 7. Please follow the steps below to ensure proper installation of the Dashboard communication software on your PC:

- 1) Exit all running Windows programs.
- 2) Run Setup.exe from the USB flash drive or CD-ROM that came with your Communication Kit or [download the latest version of Dashboard](#), extract the .zip file and run Setup.exe.
- 3) Follow the step-by-step instructions on your screen to complete the software installation. NOTE: When you are not logged on with administrator privileges, Windows may ask you for an administrator password a few times.
- 4) During installation, you may be asked to acknowledge installation of USB drivers twice.
- 5) After the software installation is completed, you can connect the USB interface box to a free USB port on your PC.

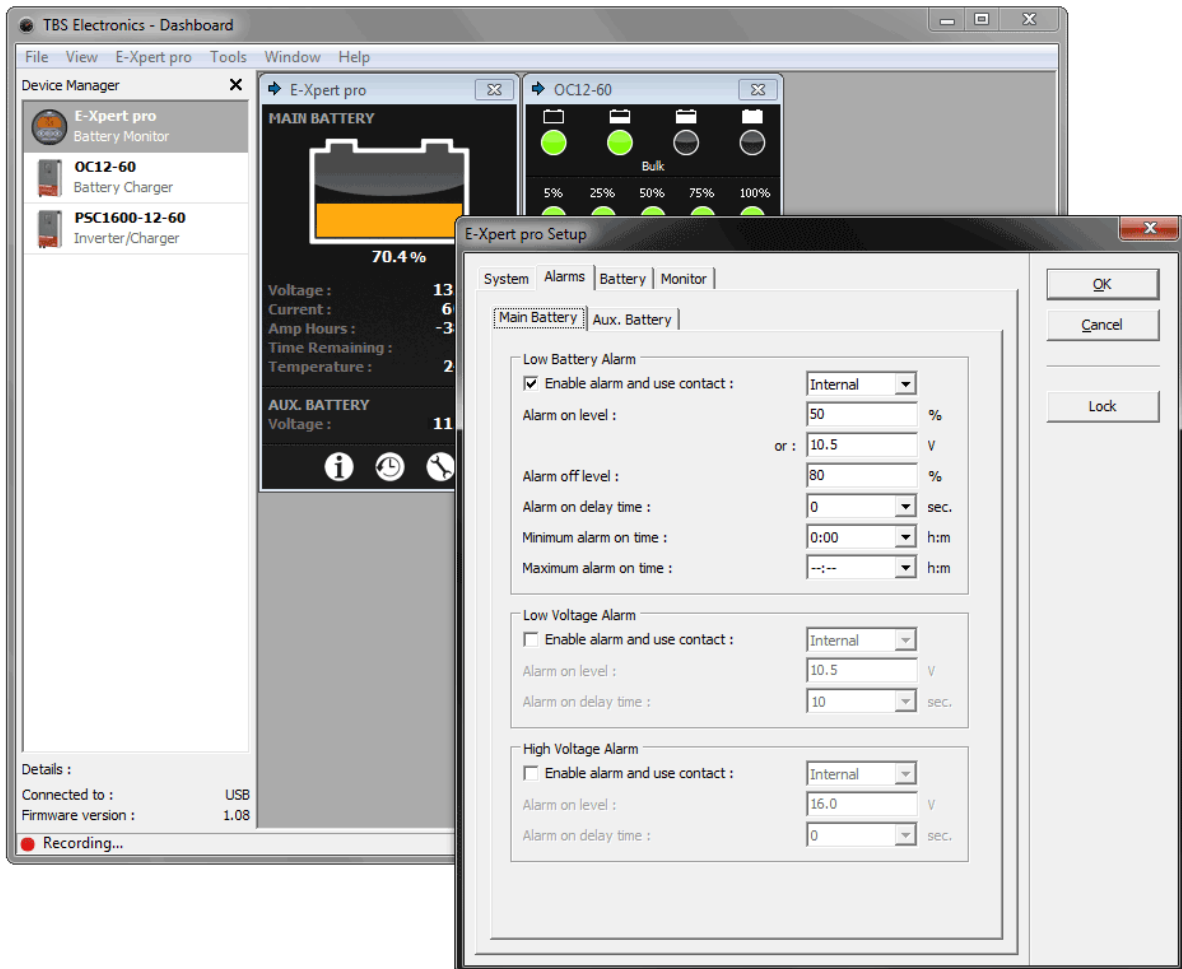
2.1 Getting started with the Dashboard software

To start the Dashboard communication software after installing, proceed with the following steps:

- 1) Click on the Windows [START] button.
- 2) Select [PROGRAMS] followed by [Dashboard].
- 3) Choose the Dashboard icon to launch the software. When your device is connected to the PC, a corresponding icon will appear in the Device manager.

3 EXPLAINING THE DASHBOARD ENVIRONMENT

The image below shows an example of the running Dashboard application:



Dashboard features a so-called MDI interface with a Device Manager on the left side and a working area on the right side of the screen. When one or more devices are connected to your PC, corresponding icons will appear in the Device Manager window. A double click on one of these icons will launch a linked control panel in the working area. This control panel shows real time data from the corresponding device. Depending on availability from the corresponding device, up to three white buttons on the bottom side of the control panel will activate the Status, History and Setup Windows. In the above image, the Setup window of an e-xpert pro battery monitor is activated. Selecting an icon in the Device Manager will also create a dedicated pull down menu in the menu bar.

3.1 The Menu bar

The menu bar contains six pull-down menus, each offering a number of corresponding execution commands.

3.1.1 Menu bar – File

<New Recording...>

Runs the recording wizard to start logging parameter data of your preferred device. Follow the wizard instructions on your screen to setup the recording. During recording a small three button control panel will appear in the working area. This panel will enable you to stop, pause or restart your recording.

<Exit>

Closes the Dashboard application.

3.1.2 Menu bar – View

<Device Manager>

Check or uncheck the Device Manager to enable or disable its appearance on the left side of the screen.

<Status Bar>

Check or uncheck the Status Bar to enable or disable its appearance on the bottom of the screen.

3.1.3 Menu bar – ‘Device name’ (e.g. ‘e-xpert pro’ or ‘OC12-60’)

Since the name of this pull-down menu is depending on the type of TBS product selected in the Device Manager, the contents of this menu will also automatically adapt to this. Currently, four TBS product types are supported in Dashboard and each corresponding device name menu will be explained below:

e-xpert (e-xpert pro or e-xpert 501)

<Show Panel>

Launch the control panel in the working area.

<Status...>

Launch the selected device’s Status Window.

<History...>

Launch the selected device’s History Window.

<Setup...>

Launch the selected device’s Setup Window.

<Rename...>



Rename the selected device.

<Make Report...>

Create and save a text file that lists all status, history and setup data of the selected device.

Omnicharge (e.g. OC12-60 or OC24-30)

<Show Panel>

Launch the control panel in the working area.

<Setup...>

Launch the selected device's Setup Window.

<Rename...>

Rename the selected device.

<Make Report...>

Create and save a text file that lists all status and setup data of the selected device.

Powersine Combi (e.g. PSC1600-12-60 or PSC1800-24-35)

<Show Panel>

Launch the control panel in the working area.

<Setup...>

Launch the selected device's Setup Window.

<Rename...>

Rename the selected device.

<Make Report...>

Create and save a text file that lists all status and setup data of the selected device.

<Update Firmware...>

Update the firmware of the selected device. A wizard will guide you through the update process. A firmware file must be supplied by TBS Electronics.

Inverter (e.g. PS1600-12 or PS1800-24)

<Show Panel>

Launch the control panel in the working area.

<Rename...>



Rename the selected device.

<Make Report...>

Create and save a text file that lists all status and setup data of the selected device.

3.1.4 Menu bar – Tools

<Charge Program Editor...>

Launch the charge program editor wizard to create or modify Omnicharge and/or Powersine Combi charge programs (see chapter 5.3 for further explanation). Charge program files are interchangeable between all devices capable of charging.

3.1.5 Menu bar – Window

<Cascade>

Cascades all control panels in the working area.

<Tile>

Tile all control panels in the working area.

<Arrange All>

Arrange all control panels in the working area.

3.1.6 Menu bar – Help

<View “User manual”>

Open this user manual (A PDF reader like Adobe Acrobat or Foxit Reader needs to be installed on your system).

<About>

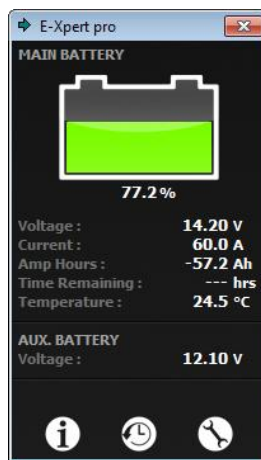
Shows Dashboard version.

4 BATTERY MONITOR CONTROL

Dashboard allows display, setup and readout of all available parameters of the e-xpert pro, e-xpert pro-hv and e-xpert 501 battery monitors.

4.1 Battery monitor display panel

Using the *Show Panel* command or by double clicking on the desired TBS product icon in the device manager, a display panel will appear in the working area. The e-xpert pro display panel is shown below:

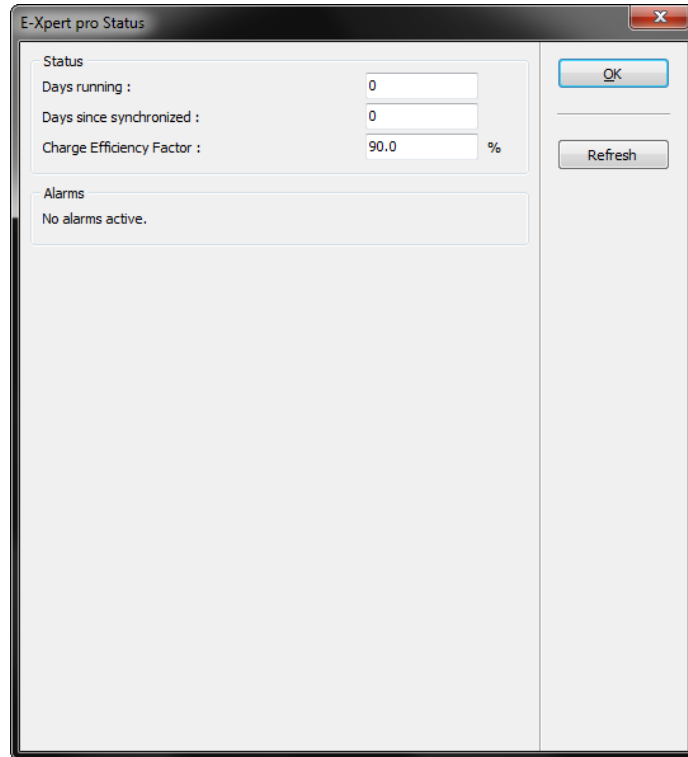


As you can see in the above picture, this panel shows the present battery voltage, current, temperature and state-of-charge as well as the amount of Amp Hours removed from the battery and the time remaining until the battery needs to be recharged.

Note that both the graphical representation of the state-of-charge and the time-remaining readout depend on the discharge floor level set in the setup menu. Both showing when the battery needs to be recharged which not necessarily means the battery is fully discharged. The numerical state-of-charge readout shows an absolute state-of-charge level where 100.0% represents a fully charged battery and 0.0% a fully discharged battery.

4.2 Battery monitor status

Using the *Status...* command from the menu will launch the e-xpert pro status window as shown below:



The Status window shows the following parameters:

Status group

<Days running>

The number of days the battery monitor is operating to monitor your battery. This item resets when a battery reset is executed.

<Days since synchronized>

The number of days the battery monitor has not been synchronized. This item resets when the battery monitor is synchronized or when a battery reset is executed.

<Charge Efficiency Factor>

The charge efficiency factor (CEF) used by the battery monitor. Depending on the value set in the setup menu, this item displays the automatically calculated CEF or the manually set CEF.

Alarms group

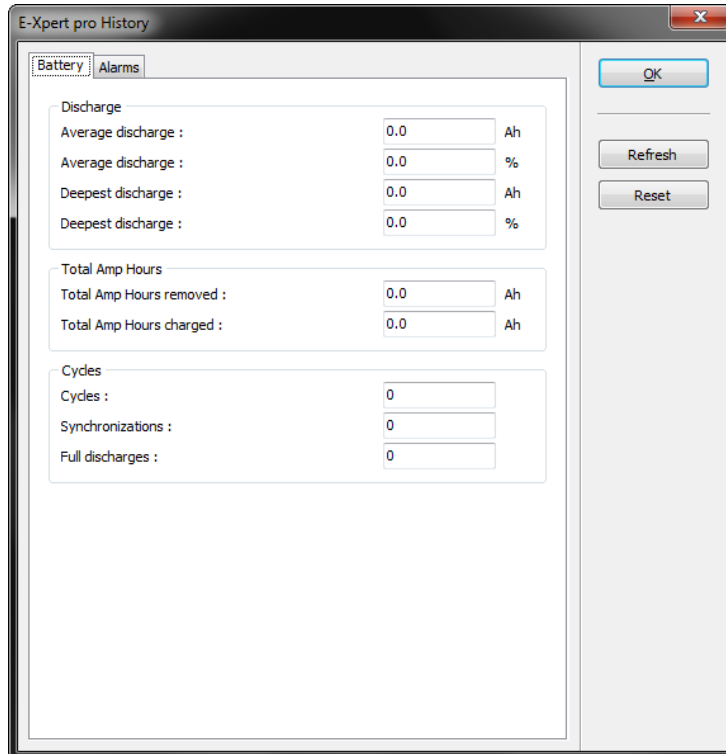
Shows the alarms that are currently active.

4.3 Battery monitor history

Using the *History...* command from the menu will launch the e-xpert pro history window.

4.3.1 The Battery tab

The e-xpert pro history window will open on the Battery tab as shown below:



Discharge group

<Average discharge (Ah)>

The average amount of Amp Hours removed from the battery per cycle. This number will be recalculated after each synchronization.

<Average discharge (%)>

The average discharge depth in % state-of-charge. This number will be recalculated after each synchronization.

<Deepest discharge (Ah)>

The deepest discharge that occurred in Amp Hours.

<Deepest discharge (%)>

The deepest discharge that occurred in % state-of-charge.

Total Amp Hours group

<Total Amp Hours removed>

The total number of Amp Hours removed from the battery.

<Total Amp Hours charged>

The total number of Amp Hours charged to the battery. These Amp Hours are not compensated by the Charge Efficiency Factor (CEF).

Cycles group

<Cycles>

The number of full cycles.

<Synchronizations>

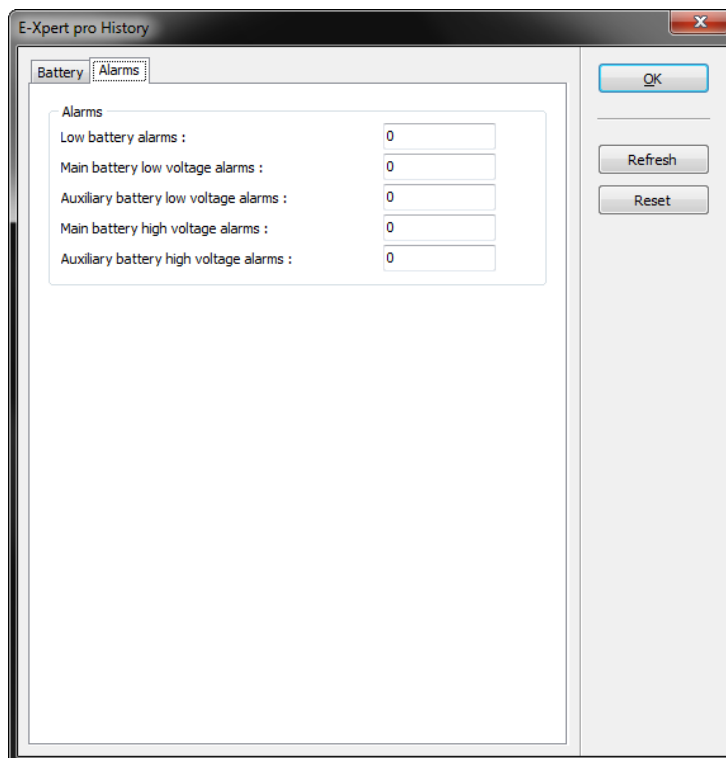
The number of synchronizations that have occurred.

<Full discharges>

The number of times the battery has been fully discharged reaching a state-of-charge of 0.0%.

4.3.2 The Alarms tab

The Alarms tab of the History window is shown below:



Alarms group

<Low Battery alarms>

The number of Low Battery alarms.

<Main battery low voltage alarms>

The number of Main battery low voltage alarms.

<Auxiliary battery low voltage alarms>

The number of Auxiliary battery low voltage alarms.

<Main battery high voltage alarms>

The number of Main battery high voltage alarms.

<Auxiliary battery high voltage alarms>

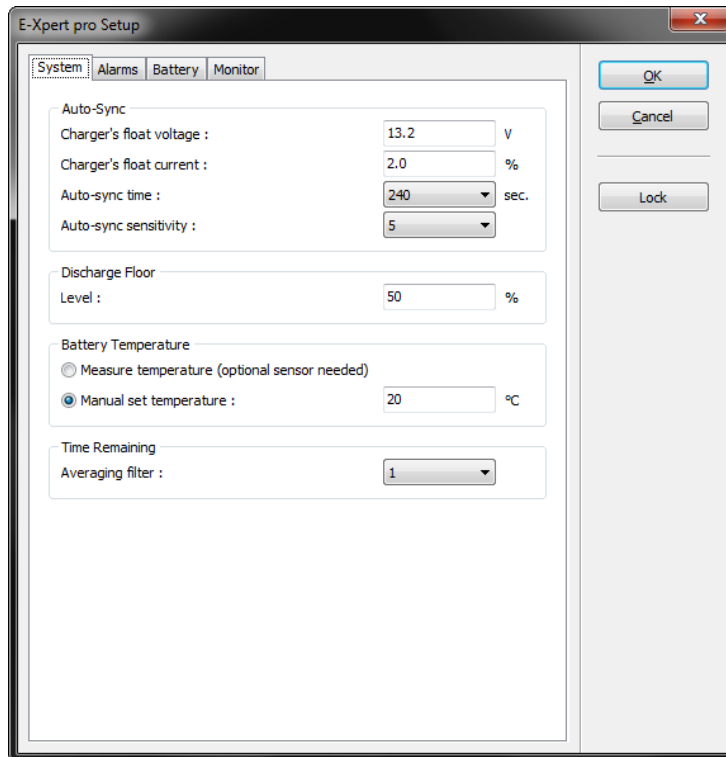
The number of Auxiliary battery high voltage alarms.

4.4 Battery monitor setup

Using the *Setup...* command will launch the e-xpert pro setup window.

4.4.1 The General tab

The e-xpert pro setup window will open on the System tab as shown below:



The System tab of the setup window allows the following settings:

Auto-sync group



<Charger's float voltage>

This value must be equal to your battery charger's float voltage. which is the last stage of the charging process. In this stage the battery is considered full.

<Charger's float current>

When the charge current is below this percentage of the battery capacity the battery is considered fully charged. Make sure this value is always greater than the minimum current at which the charger maintains the battery or stops charging.

<Auto-sync time>

The time the auto-sync voltage and current above must be met in order to consider the battery as fully charged.

<Auto-sync sensitivity>

Only change this setting when the above parameters are set correctly and automatic synchronization still fails. If automatic synchronization takes too long or does never occur, lower this value. When the battery monitor synchronizes too early, increase this value.

Discharge Floor group

<Level>

The reference point at which the battery needs to be recharged. When the state-of-charge percentage falls below this value the Charge Battery indicator starts flashing while the time remaining readout shows 0:00 and the state-of-charge bar is empty.

Battery Temperature group

Choose to either measure the battery temperature using the optional temperature sensor or set the battery temperature manually.

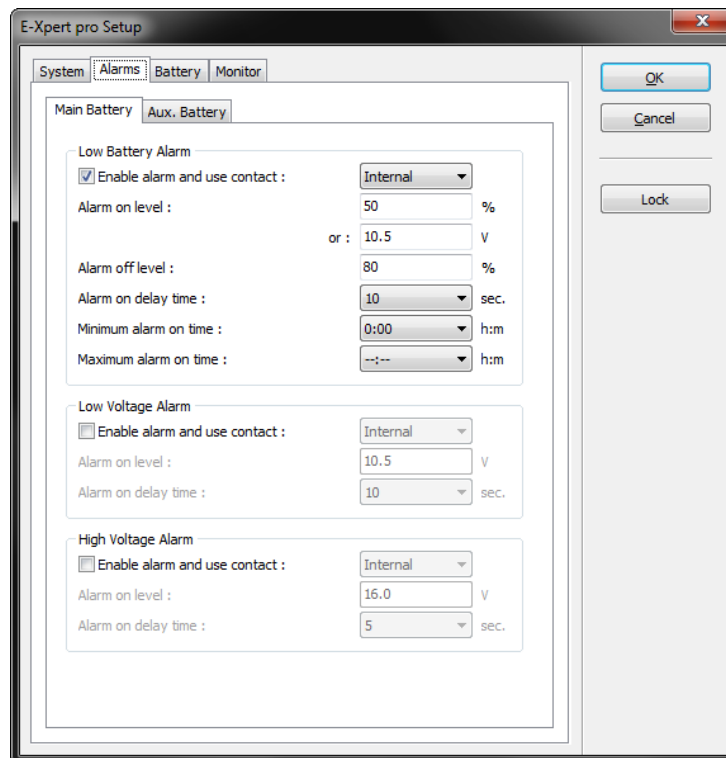
Time Remaining group

<Averaging filter>

Specifies the time window of the moving averaging filter. There are three settings, where setting 0 gives the fastest Time remaining readout response and setting 2 the slowest. The best setting will depend on the type of battery load and your personal preference.

4.4.2 The Main Battery Alarms tab

The Main Battery tab on the Alarms tab of the Setup window is shown below:



The Low Battery Alarm group

<Enable alarm and use contact>

Shows if the low battery alarm is enabled or disabled, as well as which alarm contact will be used. Besides its internal alarm contact, the e-xpert pro can control up to eight external alarm contacts. With the optional Alarm Output Expander kit (art.# 5055630), three external contacts are available ('External 1', 'External 2' and 'External 3').

<Alarm on level>

Shows both the state-of-charge and the voltage at which the low battery alarm will be activated. When the state-of-charge percentage has fallen below this value or the battery voltage has fallen below this value, the alarm will be activated.

<Alarm off level>

When the State-of-charge percentage has risen above this value and the alarm was activated, the alarm will deactivate again. When "FULL" is selected, the alarm is deactivated when the Auto-sync parameters are met.

<Alarm on delay time>

The time the alarm on conditions must be met before the alarm is activated.

<Minimum alarm on time>

Minimum time that the alarm relay stays activated, even if the State-of-charge percentage has risen above the alarm off level. Units are hours:minutes.

<Maximum alarm on time>

Maximum time that the alarm stays activated even if the state-of-charge percentage is still below the alarm off value. The value “-:-” indicates infinite at which the relay will stay activated until the state-of-charge has risen above the alarm off level. Units are hours:minutes

The Low- and High Voltage Alarm groups

<Enable alarm and use contact>

Shows if the low- or high voltage alarm is enabled or disabled, as well as which alarm contact will be used. Besides its internal alarm contact, the e-xpert pro can control up to eight external alarm contacts. With the optional Alarm Output Expander kit (art.# 5055630), three external contacts are available (‘External 1’, ‘External 2’ and ‘External 3’).

<Alarm on level>

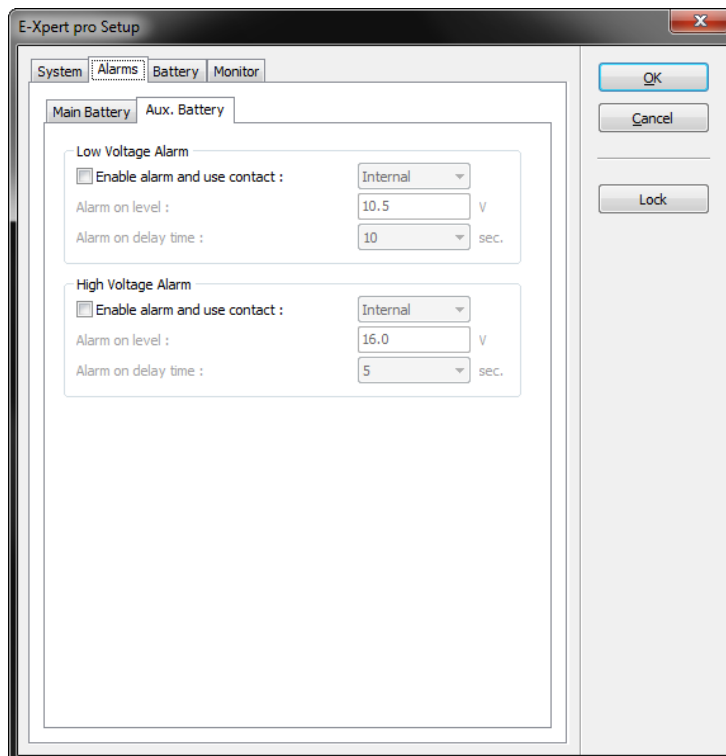
Shows the voltage at which the low- or high voltage alarm will be activated. Both the low- and high voltage alarms have a hysteresis of 0.1V

<Alarm on delay time>

The time the alarm on conditions must be met before the alarm is activated.

4.4.3 The Aux. Battery Alarms tab

The Aux. Battery tab on the Alarms tab of the Setup window is shown below:



The Low- and High Voltage Alarm groups

<Enable alarm and use contact>

Shows if the low- or high voltage alarm is enabled or disabled, as well as which alarm contact will be used. Besides its internal alarm contact, the e-xpert pro can control up to eight external alarm contacts. With the optional Alarm Output Expander kit (art.# 5055630), three external contacts are available ('External 1', 'External 2' and 'External 3').

<Alarm on level>

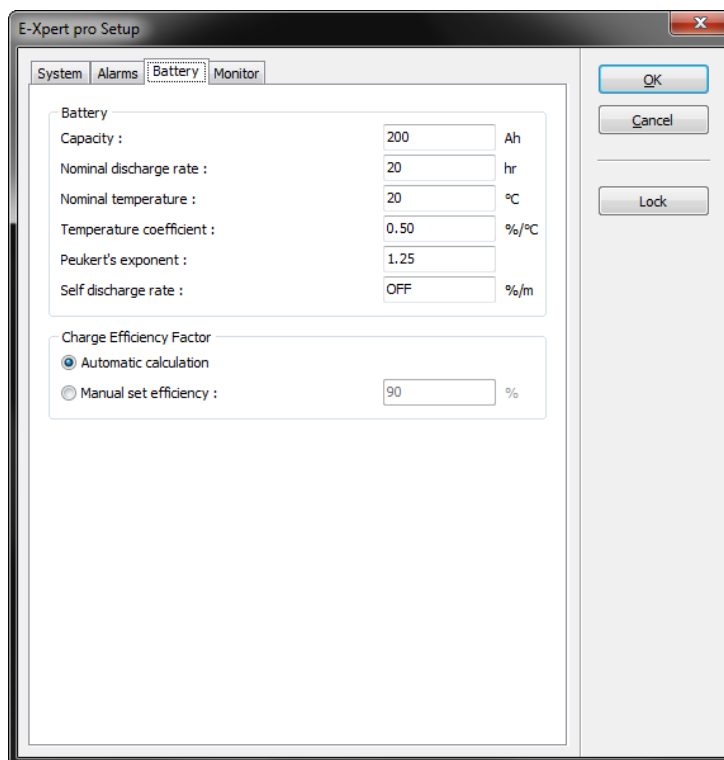
Shows the voltage at which the low- or high voltage alarm will be activated. Both the low- and high voltage alarms have a hysteresis of 0.1V

<Alarm on delay time>

The time the alarm on conditions must be met before the alarm is activated.

4.4.4 The Battery tab

The Battery tab of the Setup window is shown below:



The Battery group

<Capacity>

The Main battery's capacity in Amp Hours (Ah).

<Nominal discharge rate>



The discharge rate (C-rating in hours) at which the battery manufacturer rates your battery's capacity.

<Nominal temperature>

The temperature at which the battery manufacturer rates your battery's capacity.

<Temperature coefficient>

The percentage that your battery's capacity changes with temperature. The unit of this value is percent capacity per degree Celsius. The setting "OFF" disables temperature compensation.

<Peukert's exponent>

The Peukert's exponent represents the effect of reducing battery capacity at higher discharge rates. When the Peukert value of your battery is unknown, it is recommended to keep this value at 1.25. A value of 1.00 disables the Peukert compensation.

<Self-discharge rate>

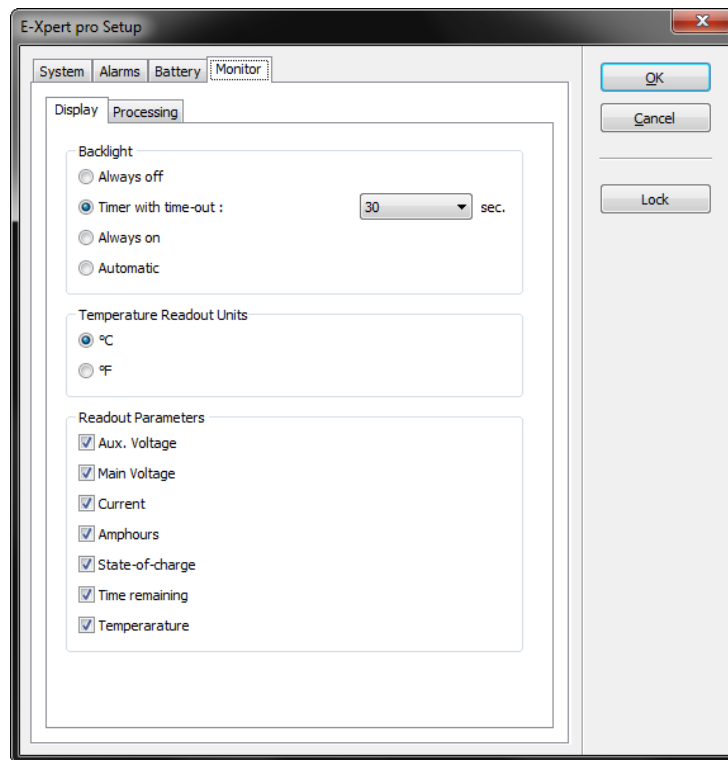
This is the rate at which the battery loses capacity by itself, even when it is not used. The unit of this value is percent capacity per month at the nominal temperature. The setting "OFF" disables self-discharge compensation.

Charge Efficiency Factor group

Choose to either let the battery monitor calculate the Charge Efficiency Factor or set the Charge Efficiency Factor manually.

4.4.5 The Monitor Display tab

The Display tab on the Monitor tab of the Setup window is shown below:



The Backlight group

Choose how the backlight behaves.

The Temperature Readout Units group

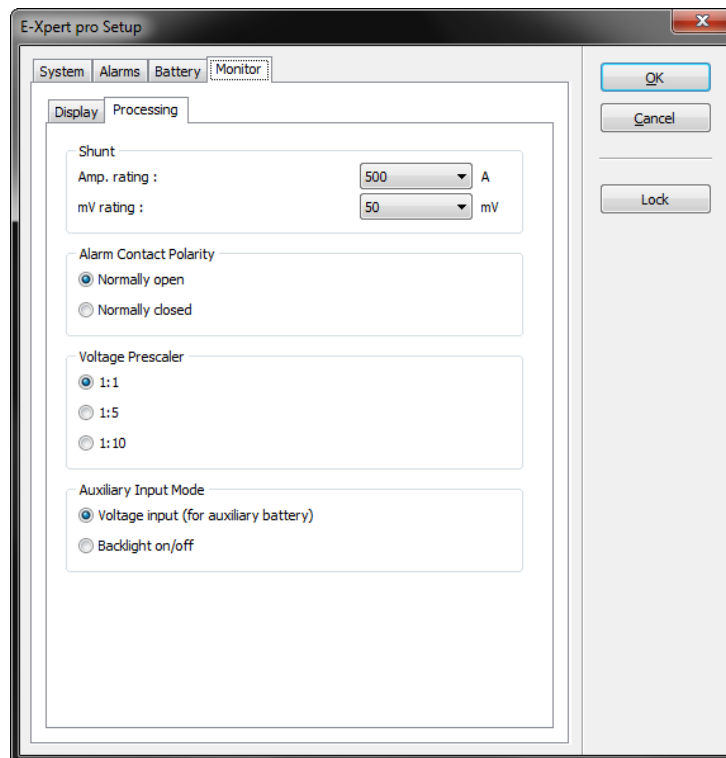
Select how you want to display the battery temperature. In °C or °F.

The Readout Parameters group

Choose which parameters you want to show on the battery monitor itself when in normal operating mode. Dashboard will always show all parameters regardless of this setting.

4.4.6 The Monitor Processing tab

The Processing tab on the Monitor tab of the Setup window is shown below:



The Shunt group

<Amp. rating>

The Amp. rating of your shunt at the given voltage indicated by mV rating. Included with your battery monitor is a 500Amp/50mV shunt, meaning that at 500A flowing through the shunt, a voltage of 50mV is generated across the small ‘Kelvin’ screw terminals of the shunt. This voltage will be used by the battery monitor to measure the amount of current.

<mV rating>

The millivolt rating of your shunt at the given current indicated by Amp. rating. The battery monitor supports 50mV and 60mV shunts.

The Alarm Contact Polarity group

Select whether the internal alarm relay should be normally opened or normally closed.

The Voltage Prescaler group

This setting is only important when an optional voltage prescaler is installed on the battery monitor. All voltage related Functions are linked to this setting. Always keep this Function set to “1-1” when no prescaler is installed! Not available on the e-xpert pro hv.

The Auxiliary Input Mode group

<Voltage input (for auxiliary battery)>

Configures the V_A input to operate in normal voltage measurement mode.



<Backlight on/off>

Configures the V_A input to control the backlight. In this mode, the backlight is switched ON at an input voltage higher than 2V and switched OFF if the voltage is below 1V.

The Communication group

<Request mode>

When enabled, the battery monitor only sends data when requested. When disabled the battery monitor broadcasts data.

<E-Xpert 501 compatibility mode>

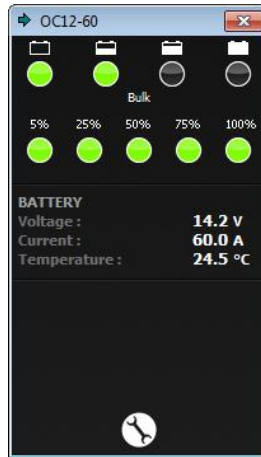
When enabled the e-xpert pro sends parameter data in the same format as the E-Xpert 501.

5 OMNICHARGE CONTROL

Dashboard allows display, setup and readout of all available parameters of your Omnicharge battery charger. Additionally, Dashboard allows you to create new or modify existing charge programs using the [Charge Program Editor](#). This way the Omnicharge can be adapted to all types of batteries.

5.1 Omnicharge display panel

Using the *Show Panel* command or by double clicking on the desired TBS product icon in the device manager, a display panel will appear in the working area. The Omnicharge display panel is shown below:



This panel shows the charge progress bar, the output current indication bar and the present battery voltage, current and temperature. When the temperature sensor is not connected, the temperature reading shows --.-°C.

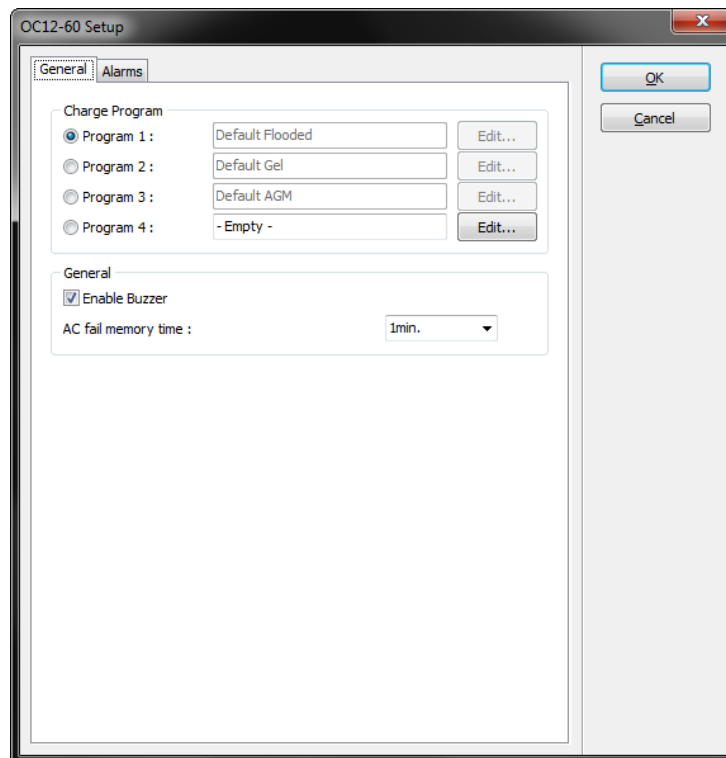
5.2 Omnicharge setup

Important: Omnicharge setup by Dashboard is only possible when dipswitch 1 on the Omnicharge is set to ON ("EXT.")

Using the *Setup...* command will launch the Omnicharge setup window.

5.2.1 The General tab

The Omnicharge setup window will open on the General tab as shown below:



The General tab of the setup window allows the following settings:

Charge Program group

The charge program group shows the four available charge program banks of your Omnicharge battery charger. You can select one of the desired default charge programs or a custom made charge program saved in Program bank 4. The default Programs 1 (Flooded), 2 (Gel) and 3 (AGM) cannot be replaced or edited. Program 4 can be edited or replaced by pressing the *Edit...* button which opens the [Charge Program Editor](#).

When done press the *Ok* button to transfer all changed data to the Omnicharge or press the *Cancel* button to close the setup window without transferring any data to the Omnicharge.

General group

<Enable Buzzer>

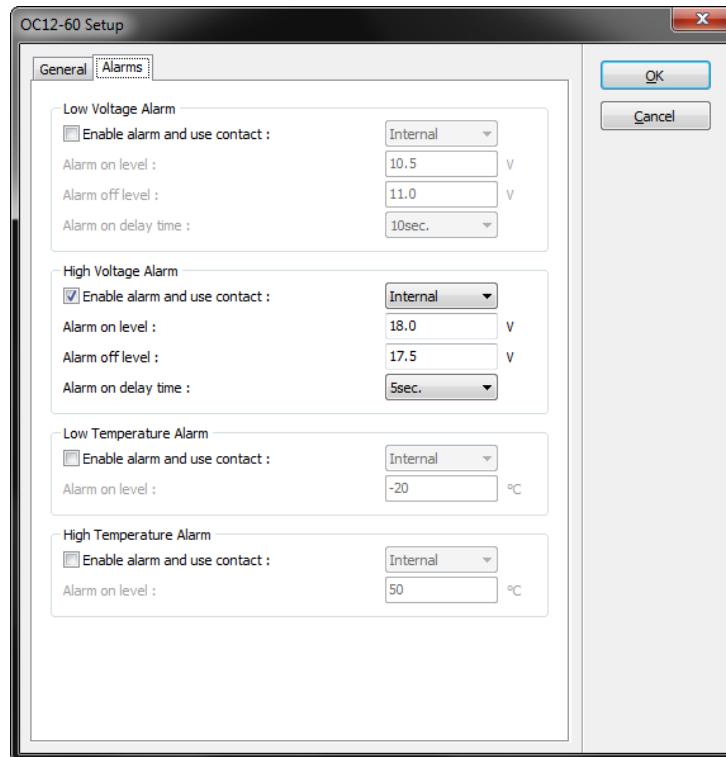
Enable or disable the internal buzzer which sounds when activating the charger or when the charge process is finished.

<AC fail memory time>

Shows the time that the Omnicharge will remember the charge stage in which it operated, after the AC mains has failed. This feature prevents the connected battery from being overcharged by not starting the complete charge process again after a short AC mains interruption.

5.2.2 The Alarms tab

The Alarms tab of the Setup window is shown below:



The following options and parameters can be edited:

Low Voltage Alarm group

<Enable alarm and use contact>

Shows if the battery low voltage alarm is enabled or disabled, as well as which alarm contact will be activated. Please note that the Omnicharge battery chargers will not charge batteries with a voltage lower than 1V/cell (6V @ 12V and 12V @ 24V), to avoid hazardous situations.

<Alarm on level>

Shows the voltage at which the low voltage alarm will be activated.

<Alarm off level>

Shows the voltage at which the low voltage alarm will be deactivated.

<Alarm on delay time>

Shows the time the Alarm on condition must be met before activating the alarm.

High Voltage Alarm group

<Enable alarm and use contact>

Shows if the battery high voltage alarm is enabled or disabled, as well as which alarm contact will be activated.



<Alarm on level>

Shows the voltage at which the high voltage alarm will be activated.

<Alarm off level>

Shows the voltage at which the high voltage alarm will be deactivated.

<Alarm on delay time>

Shows the time the Alarm on condition must be met before activating the alarm.

Low Temperature Alarm group

<Enable alarm and use contact>

Shows if the battery low temperature alarm is enabled or disabled, as well as which alarm contact will be activated. This alarm will be deactivated automatically when the battery temperature has risen 1°C above the 'Alarm on level'.

<Alarm on level>

Shows the temperature at which the low temperature alarm will be activated.

High Temperature Alarm group

<Enable alarm and use contact>

Shows if the battery high temperature alarm is enabled or disabled, as well as which alarm contact will be activated. This alarm can only be deactivated by resetting the Omnicharge. This user intervention is needed to check whether the excessive temperature rise was caused by the charging process or not.

<Alarm on level>

Shows the temperature at which the high temperature alarm will be activated.

6 POWERSINE COMBI CONTROL

Dashboard allows display, setup and readout of all available parameters of your Powersine Combi inverter/charger. Additionally, Dashboard allows you to create new or modify existing charge programs using the [Charge Program Editor](#). This way the Powersine Combi can be adapted to all types of batteries.

6.1 Powersine Combi display panel

Using the *Show Panel* command or by double clicking on the desired TBS product icon in the device manager, a display panel will appear in the working area. The Powersine Combi display panel is shown below:



The panel's top section shows the charge progress bar, the power indication bar and the mode indicators. The charge progress bar is only active when in charger mode and gives a rough indication of the charge progress. The power indication bar is a dual function level bar. It indicates the percentage of delivered output power in inverter mode (turns red if more than nominal output power is being delivered to the load). In charger mode, this level bar indicates the percentage of delivered charging current. The mode indicators indicate the operating mode of the Powersine Combi, as well as the status of each different mode :

charger	off	Not charging
	on (green)	Charging
	on (blinking red)	Error
	on (red)	Charger disabled



inverter	Off	Not inverting
	On (green)	Inverting or power boosting
	On (blinking red)	Error
	On (red)	Inverter disabled
AC-in	Off	No AC input present, transfer switch open
	On (blinking green)	AC input present and within range, Powersine Combi is synchronizing
	On (green)	AC input approved, transfer switch closed
	On (blinking red)	AC input present but out of range
	On (red)	AC transfer switch disabled

The left side of the middle section shows all measured parameters divided into sections. When no AC-in signal is present the AC INPUT parameters all show ---. When the battery temperature sensor is not connected, the temperature reading shows --.-°C.

The right side of the middle section allows you to set the AC-in current limit and the maximum charge current. These levels can be changed by clicking the – and + signs on the level bars. Note that if either of these limit levels is not allowed to be changed by a remote control, the corresponding level bar is not shown on the panel.

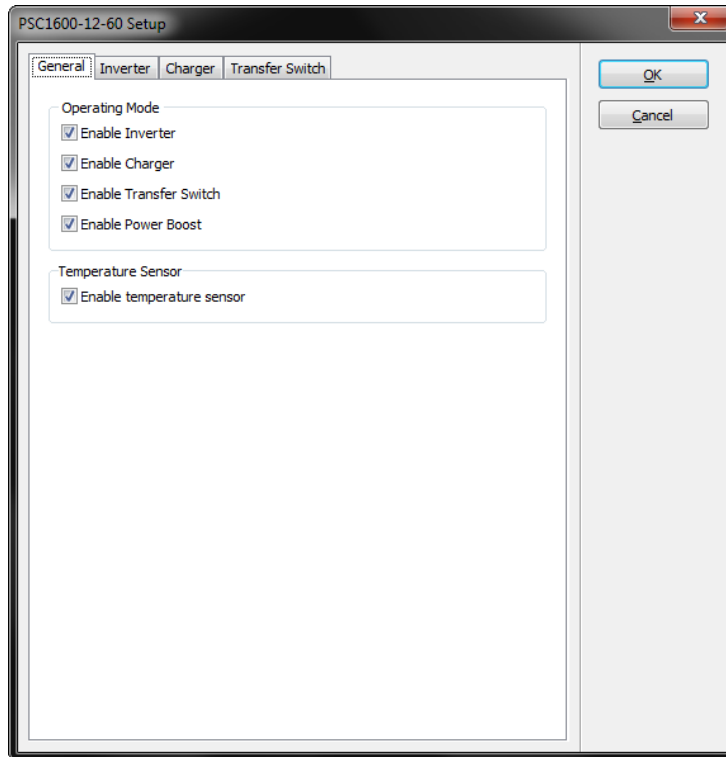
6.2 Powersine Combi setup

Important: Powersine Combi setup by Dashboard is only possible when dipswitch 1 on the Powersine Combi is set to ON (“EXT.”)

Using the *Setup...* command will launch the Powersine Combi setup window.

6.2.1 The General tab

The Powersine Combi setup window will open on the General tab as shown below:



The General tab of the setup window allows the following settings:

Operating Mode group

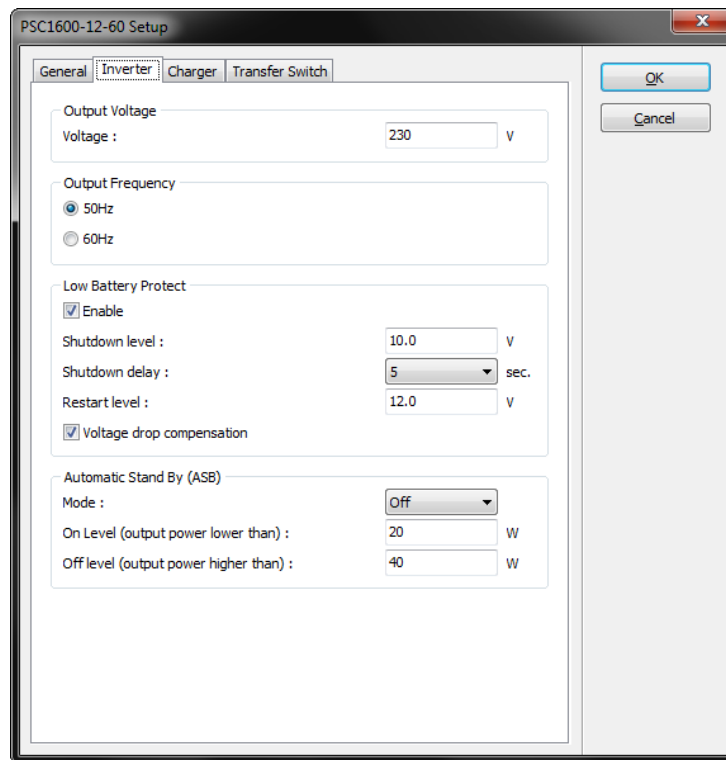
Enable or disable individual operating modes. Note that when disabling the transfer switch, the charger is unable to operate.

Temperature Sensor group

Enable or disable battery temperature measurement and charge voltage compensation.

6.2.2 The Inverter tab

The Inverter tab of the Setup window is shown below:



The Inverter tab of the setup window allows the following settings:

Output Voltage group

<Voltage>

The AC-output voltage when operating in inverter mode.

Output Frequency group

Select the AC-output frequency when operating in inverter mode.

Low Battery Protect group

<Enable>

Enable or disable low battery protection with user programmable shutdown, restart and delay values. Turning Low Battery Protect off, results in immediate inverter shutdown when the battery voltage is less than 8.0V.

<Shutdown level>

Low Battery Protect shutdown battery voltage.

<Shutdown delay>

The time the battery voltage has to be below the shutdown level before inverter shutdown.

<Restart level>



The battery voltage at which the inverter continues operation after a Low Battery Protect shutdown.

<Voltage drop compensation>

Enable if you want to compensate the DC cable voltage drop. This lowers the shutdown level as more current is drawn from the battery.

Automatic Stand By (ASB) group

<Mode>

Turn ASB on or off. If on, the inverter will jump to ASB mode automatically when the connected load power consumption drops below the on level. In ASB mode the inverter pulses its output sine wave in order to detect when the connected load requires more power again. As soon as the load power demand is above the off level, the inverter will automatically jump to continuous mode delivering uninterrupted power to the load. While running in ASB mode, the Powersine Combi itself draws significantly less current from the battery. When disabled, the inverter will always run in continuous mode, which is better for critical loads like computers, clocks and AV equipment

<On level>

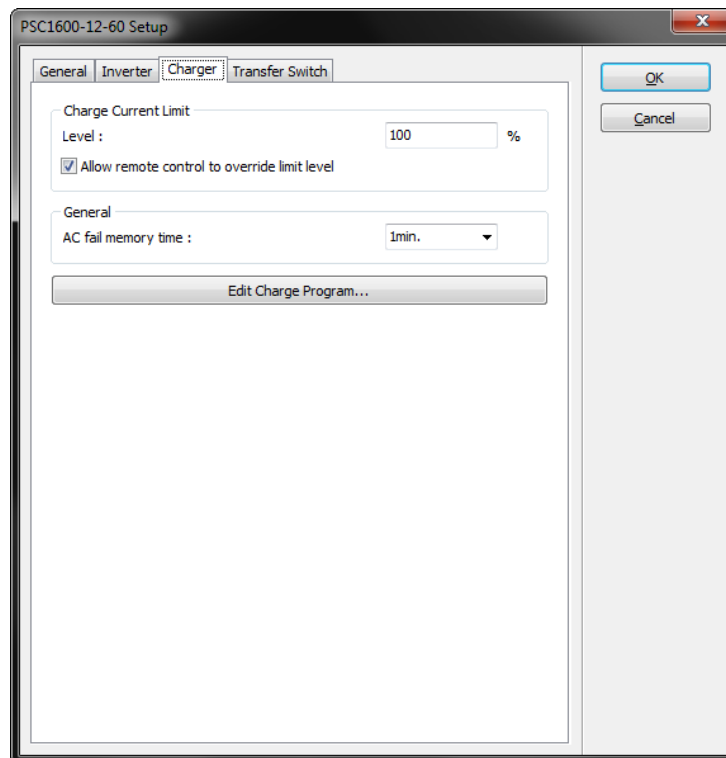
ASB on level. The level at which the inverter jumps to ASB mode (starts pulsing).

<Off level>

ASB off level. The level at which the inverter jumps to continuous mode (stops pulsing).

6.2.3 The Charger tab

The Charger tab of the Setup window is shown below:



The Charger tab of the setup window allows the following settings:

Charge Current Limit group

<Level>

This parameter sets the maximum charge current in percent. 100% equals 60A for the PSC1600-12-60 and 35A for the PSC1800-24-35. You can set this parameter to a lower value when the connected battery is too small to handle the maximum charge current, or when you wish to (temporarily) reduce the charger's current share in the total amount of current flowing through the AC input of the Powersine Combi. The AC input current limit is set separately.

<Allow remote control to override limit level>

Select whether or not the limit level may be overridden by the Universal Remote Control or the Dashboard device panel. If not allowed, the corresponding rotary dial will not show up on the Universal Remote Control and the level bar will not show up on the Dashboard device panel.

General group

<AC fail memory time>

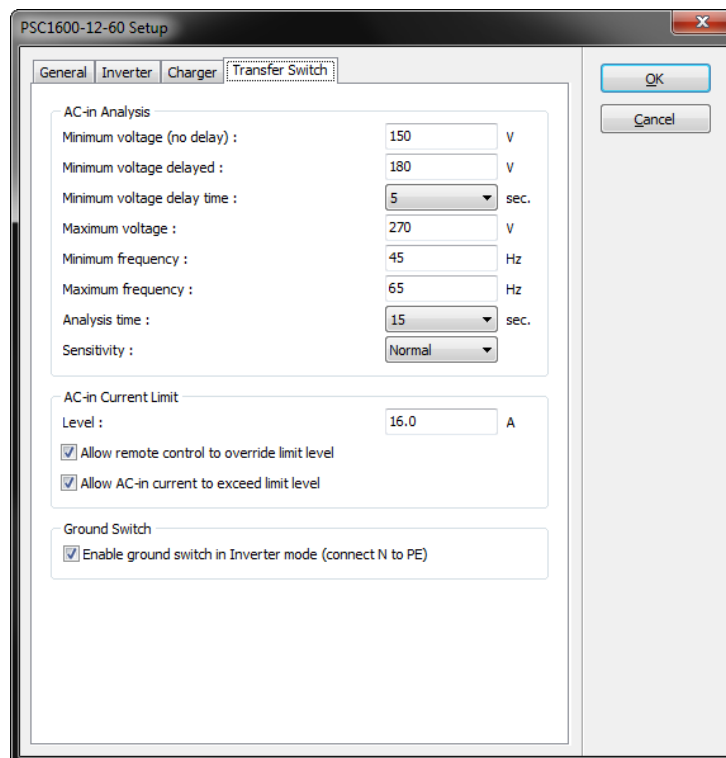
Shows the time that the Omnicharge will remember the charge stage in which it operated, after the AC mains has failed. This feature prevents the connected battery from being overcharged by not starting the complete charge process again after a short AC mains interruption.

Edit Charge Program button

Press this button to open the [Charge Program Editor](#) and edit the custom charge program.

6.2.4 The Transfer Switch tab

The Transfer Switch tab of the Setup window is shown below:



The Transfer Switch tab of the setup window allows the following settings:

AC-in Analysis group

<Minimum voltage (no delay)>

The minimum allowed AC-input voltage. When the AC-input voltage is lower than this level, the AC-input will be rejected immediately and the transfer switch will open (disconnecting AC-in).

<Minimum voltage delayed>

The minimum allowed AC-input voltage. When the AC-input voltage is lower than this level for a duration of Minimum voltage delay time, the AC-input will be rejected and the transfer switch will open (disconnecting AC-in).

<Minimum voltage delay time>

The time the AC-input voltage has to be lower than Minimum voltage delayed before the AC-input is rejected.

<Maximum Voltage>

The maximum allowed AC-input voltage. When the AC-input voltage is higher than this level, the AC-input will be rejected and the transfer switch will open (disconnecting AC-in).

<Minimum frequency>

The minimum allowed AC-input frequency. When the frequency is lower than this level, the AC-input is rejected and the transfer switch will open (disconnecting AC-in).

<Maximum frequency>

The maximum allowed AC-input frequency. When the frequency is higher than this level, the AC-input is rejected and the transfer switch will open (disconnecting AC-in).

<Analysis time>

The time the AC-input is analyzed before closing the transfer switch (connecting AC-in). This time is used to let the AC-input stabilize, often necessary when using generators.

<Sensitivity>

The sensitivity of the AC-input waveform fidelity analyzer. Higher sensitivity reduces the mains to inverter transfer time but is stricter on waveform fidelity. The setting Very Low disables the waveform fidelity analyzer but has the highest mains to inverter transfer time. The settings Low and Very Low can be used when the AC input signal is distorted or unstable, which could be the case when a small generator is used. The settings High and Very High can be used when the Powersine Combi is connected to a solid grid or quality generator.

AC-in Current Limit group

<Level>

Represents the maximum continuous current that the Powersine Combi will draw from the AC input source. To assure this, the Powersine Combi will either reduce the charge current automatically or (when enabled) activate the AC Input Power Boost feature which will supply the additional power demand by running the inverter in parallel with the AC

<Allow remote control to override limit level>

Select whether or not the limit level may be overridden by the Universal Remote Control or the Dashboard device panel. If not allowed, the corresponding rotary dial will not show up on the Universal Remote Control and the level bar will not show up on the Dashboard device panel.

<Allow AC-in current to exceed limit level>

Select whether or not the AC-input current may exceed the limit level. When not allowed, the Powersine Combi will open the transfer switch (disconnecting AC-in) when it is not capable

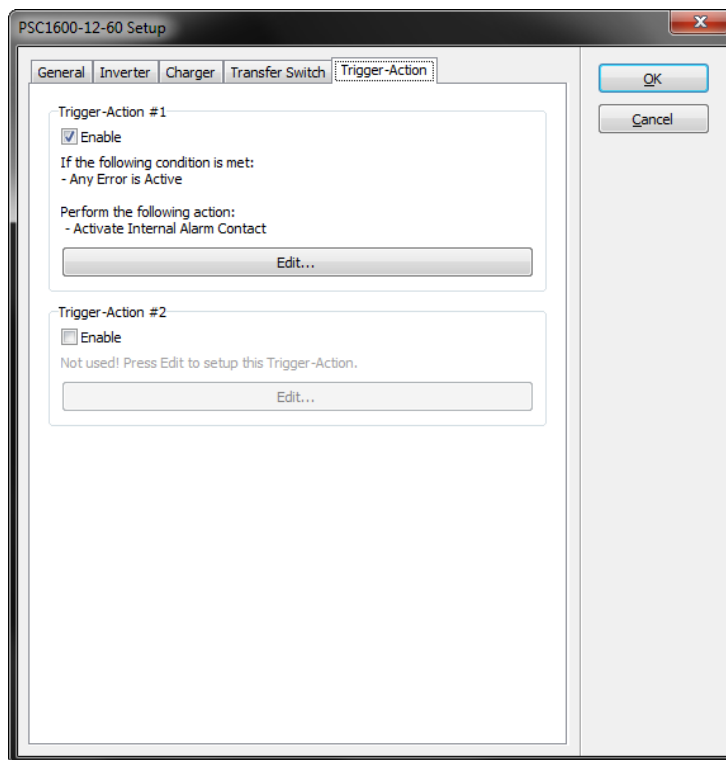
of limiting the AC-in current to the limit level set. This may happen when Power Boost is disabled or the maximum boost capacity is used and the load on the AC-output requires more power.

Ground Switch group

The ground switch is an internal relay that automatically connects AC output Neutral (N) to Protective Earth (PE = chassis) in inverter mode. This enables the use of a ground fault circuit interrupter (GFCI) at the AC output of the Powersine Combi. When a non-grounded (floating-) output is required, this setting can be disabled.

6.2.5 The Trigger-Action tab

Trigger-Actions are available on firmware version 1.1.0 and up. The Trigger-Action tab of the Setup window is shown below:



Trigger-Actions allow you to let the Powersine Combi perform actions when a specified conditions are met. There are two Trigger-Actions available.

Trigger-Action #1 and #2 groups

<Enable>

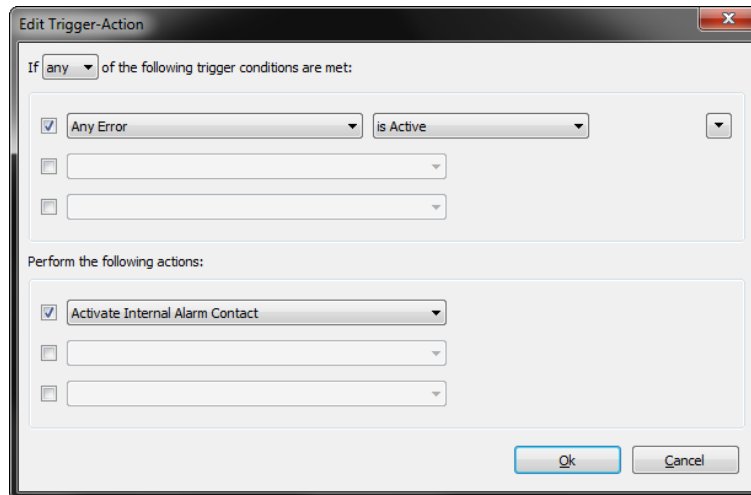
Enable or disable this Trigger-Action.

<Description>

A description of this Trigger-Action.

<Edit button>

Press this button to open the Trigger-Action edit window shown below:



Each Trigger-Action is made up of a trigger part and an action part. The trigger part can hold up to three conditions. When multiple conditions are enabled you can choose whether any one condition or all conditions must be met in order to perform the action(s). Some example conditions are:

- Battery Voltage is Greater Than 13.0V
- AC In Voltage is Less Than 200V
- Charge Stage is Float
- Any Error is Active

The action part can hold up to three actions which are all executed when the trigger conditions are met. Some example actions are:

- Force Charge Stage to Float
- Activate Internal Alarm Contact

On the left of each condition and action there is a checkbox to enable or disable the corresponding condition or action. If all conditions and actions are disabled (all checkboxes are unchecked) the Trigger-Action is empty and therefore disabled. It's description will show 'Not used!' when empty.

The factory default setting for Trigger-Action #1 is:

If Any Error is Active then Activate Internal Alarm Contact

Which simply means that the internal alarm contact is activated when the Powersine Combi is in error mode regardless of what caused the error.

Triggers overview



<Battery Voltage>

True when the battery voltage is either *lower than* or *higher than* the trigger level.

<Battery Current>

True when the current in or out of the battery is either *lower than* or *higher than* the trigger level. A charge current is represented as a positive number (no sign) and a discharge current as a negative number (minus sign).

<Battery Temperature>

True when the temperature of the battery (in °C) is either *lower than* or *higher than* the trigger level. Requires a connected battery temperature sensor (included with the device).

<AC In Voltage>

True when the AC input voltage is either *lower than* or *higher than* the trigger level.

<AC In Current>

True when the AC input current is either *lower than* or *higher than* the trigger level.

<AC In Power>

True when the AC input power (in VA's) is either *lower than* or *higher than* the trigger level.

<AC In Frequency>

True when the AC input frequency is either *lower than* or *higher than* the trigger level.

<AC In Current Limit>

True when the AC input current limit level is either *lower than* or *higher than* the trigger level. The AC input current limit level represents the maximum continuous current that the device will draw from the AC input source. This level can be set by Dashboard or the optional Universal Remote Control.

<AC In Signal>

True when the AC input signal is either *good*, *bad*, *present* or *not present*. A signal is considered good when its voltage, frequency and fidelity are within boundaries for a predefined analysis time and the transfer switch is closed. A signal is considered bad when either its voltage, frequency or fidelity are not within boundaries after the predefined analysis time. Any signal applied to the AC input will mark the signal as present as soon as the signal is applied. No signal applied to the AC input will mark the signal as not present.

<AC Out Voltage>

True when the AC output voltage is either *lower than* or *higher than* the trigger level.

<AC Out Current>



True when the AC output current is either *lower than* or *higher than* the trigger level.

<AC Out Power>

True when the AC output power (in VA's) is either *lower than* or *higher than* the trigger level.

<AC Out Frequency>

True when the AC output frequency is either *lower than* or *higher than* the trigger level.

<AC Out Signal>

True when the AC output signal is either *present* or *not present*.

<Device Operating Mode>

True when the device operating mode is either *stand by*, *normal* or *charger only*. Set by the device's front panel switch (position I or II) or the optional Universal Remote Control.

<Inverter>

True when the inverter module is either *active*, *not active*, *enabled* or *not enabled*. The inverter module is active when the device is operating in inverter mode supplying power to the connected load, idling with no load connected or pulsing the AC output in ASB mode. Otherwise it is not active.

<Charger>

True when the charger module is either *active*, *not active*, *enabled* or *not enabled*. The charger module is active when the device is operating in charger mode charging the battery regardless of the charge stage with the exception of the error stage.

<Transfer Switch>

True when the transfer switch is either *active*, *not active*, *enabled* or *not enabled*. The transfer switch is active when it is closed (connecting the AC input to the AC output).

<Power Boost>

True when Power Boost is either *active*, *not active*, *enabled* or *not enabled*. Power Boost is active when the device is assisting the AC input source powering the AC output load. Otherwise it is not active.

<Charge Stage>

True when the charger is active and either is or is not operating in one of the following stages: Soft Start, Bulk, Extended Bulk, Absorption, Analyze, Float, Pulse, Equalize, Stop or Error.

<Dashboard Trigger [1..4]>

True when Dashboard trigger 1..4 is either *active* or *not active*. Dashboard triggers are reserved for future versions of Dashboard.



<Trigger Input>

True when the trigger input is either *active* (shorted) or *not active* (open).

<Internal Alarm Contact [1..2]>

True when the internal alarm contact is either *active* or *not active*. On devices equipped with two alarm contacts the number specifies which contact to use.

<External Alarm Contact [1..8]>

True when the external alarm contact is either *active* or *not active*. The number specifies the contact to use.

<Low Battery Protect Error>

True when the low battery protect error is either *active* or *not active*. This error prevents the battery from being discharged too deep and affects only the inverter module. The transfer switch and charger modules are not affected. When low battery protect is disabled (by DIP switch or Dashboard) the device will never enter the low battery protect error mode.

<Low Battery Voltage Error>

True when the low battery voltage error is either *active* or *not active*. The device enters low battery voltage error mode when the battery voltage is too low for the device to work properly. All modules are disabled.

<High Battery Voltage Error>

True when the high battery voltage error is either *active* or *not active*. The device enters high battery voltage error mode when the battery voltage is too high for the device to work properly. All modules are disabled.

<High Battery Ripple Error>

True when the high battery ripple error is either *active* or *not active*. This error is usually caused by improper installation.

<AC Overload Error>

True when the AC output overload error is either *active* or *not active*.

<High Temperature Error>

True when the high device temperature error is either *active* or *not active*.

<Charge Program Error>

True when the charge program error is either *active* or *not active*.

<External Error>

True when the external error is either *active* or *not active*.



<Any Error>

True when any of the above errors is either *active* or *not active*.

Actions overview

<Do Nothing>

Perform no action.

<Activate Internal Alarm Contact (1..2)>

Activates the device's onboard alarm contact. On devices equipped with two alarm contacts the number specifies which contact to use.

<Activate External Alarm Contact (1..8)>

Activates an alarm contact on an alarm output expander connected to the device. The number specifies the contact to use. Currently only a 3 output alarm output expander is available which contains 3 potential free alarm contacts.

<Force Inverter Mode Off>

Disables the inverter module on the device. The 'inverter on' LED is continuously red to indicate this module is disabled.

<Force Inverter Mode On>

Enables the inverter module on the device and operate in normal mode (Automatic Stand By disabled). The 'inverter on' LED may be off, continuously green or flashing red depending on operating mode and status.

<Force Inverter Mode ASB>

Enables the inverter module and the Automatic Stand By feature. The 'inverter on' LED may be off, continuously green or flashing red depending on operating mode and status.

<Force Charger Mode Off>

Disables the charger module on the device. The 'charger on' LED is continuously red to indicate this module is disabled.

<Force Charger Mode On>

Enables the charger module and operate in normal mode. The 'charger on' LED may be off, continuously green or flashing red depending on operating mode and status.

<Force Charger Mode Forced Float>

Enables the charger module and forces float stage when charging. The 'charger on' LED may be off, continuously green or flashing red depending on operating mode and status.

<Force Transfer Switch Mode Off>



Prohibits the transfer switch from closing. The 'AC in' LED is continuously red to indicate this module is disabled.

<Force Transfer Switch Mode On>

Allows the transfer switch to close when the AC input signal is good. The 'AC in' LED may be off, continuously green or flashing green or red depending on operating mode and status.

<Force Power Boost Off>

Disables the Power Boost feature.

<Force Power Boost On>

Enables the Power Boost feature.

<Restart Charge Program>

Starts the charge program from the beginning and resets all charge program related timers. This is a 'one shot' action. The charge program is reset only when the trigger condition changes from false to true and will run from then on. It is not held in reset while the trigger condition is true.

<Force Charge Stage to Float>

Forces the float stage when charging. The charge program is held in float while the trigger condition is true. When the trigger condition changes to false the charge program stays in float until the float stage exit conditions are met.

<Force Charge Stage to Equalize>

Forces the equalize stage when charging. This is a 'one shot' action. The equalize stage is started only when the trigger condition changes from false to true and will run until the equalize stage exit conditions are met. The charge program is not held in equalize while the trigger condition is true.

<Force Charge Stage to Stop>

Forces the charger to stop charging. The charge program is held in stop while the trigger condition is true. When the trigger condition changes to false the charge program stays in stop until the stop stage exit conditions are met.

<Force Charge Stage to Error>

Forces the charger to stop charging and display an error. A charge program reset is necessary to exit the error stage. The 'charger on' LED is blinking red to indicate a charge program error.

<Force Low Battery Protect Error>

Forces a low battery protect error. The 'inverter on' led is blinking red to indicate a low battery protect error. The error is active while the trigger condition is true and only affects the inverter module.

<Force Low Battery Voltage Error>

Forces a high battery voltage error. The 'inverter on', 'charger on' and 'AC in' leds are blinking red to indicate a high battery voltage error. The error is active while the trigger condition is true and affects all modules.

<Force High Battery Voltage Error>

Forces a high battery voltage error. The 'inverter on', 'charger on' and 'AC in' leds are blinking red to indicate a high battery voltage error. The error is active while the trigger condition is true and affects all modules.

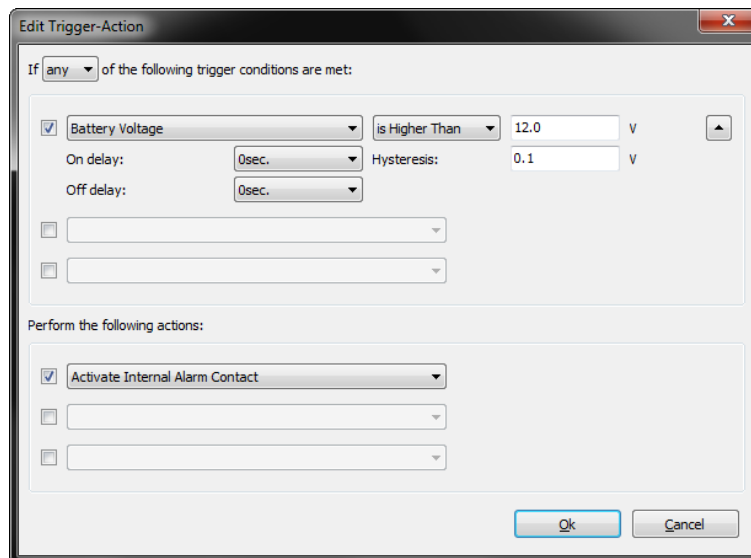
<Force External Error>

Forces an external error. The 'inverter on', 'charger on' and 'AC in' leds are blinking red to indicate an external error. The error is active while the trigger condition is true and affects all modules.

Note that when any error is triggered too frequently, the device enters a fatal error state in which all modules are disabled and a manual device reset is required.

Trigger options

On the right of each condition there is a button to show or hide a set of extra options for the corresponding condition.



<On delay>

The time the corresponding condition has to be met before the condition is considered true.

<Off delay>

The time the corresponding condition has to be met before the condition is considered false.

<Hysteresis>



Only available when trigger condition is a value type. Specifies the difference between condition true level and the condition false level.

For example when the condition is:

- Battery Voltage is Greater Than 12.0V

And the Hysteresis is set to 0.1V (default for battery voltage), the condition is true when the battery voltage rises above 12.0V and stays true until the battery voltage drops below 11.9V (12.0V - 0.1V). When the condition is changed to:

- Battery Voltage is Lower Than 12.0V

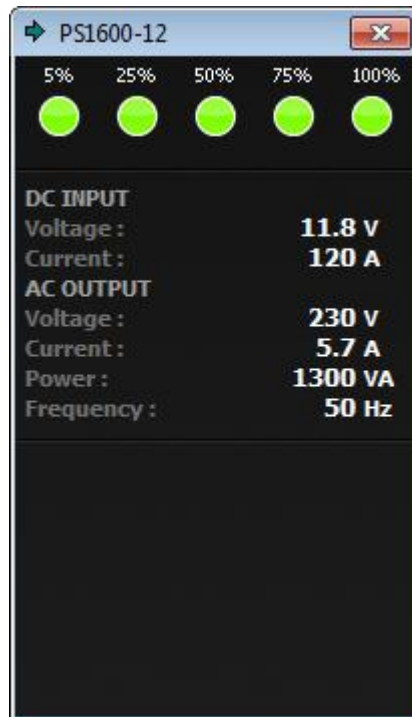
While Hysteresis stays at 0.1V, the condition is true when the battery voltage drops below 12.0V and stays true until the battery voltage rises above 12.1V (12.0 + 0.1V).

POWERSINE CONTROL

Dashboard allows display of all available parameters of your Powersine DC to AC sinewave inverter.

6.3 Powersine display panel


Using the *Show Panel* command or by double clicking on the desired TBS product icon in the device manager, a display panel will appear in the working area. The Powersine display panel is shown below:



This panel shows the output current indication bar and the present battery voltage and current and AC output voltage, current, power and frequency. Currently the Powersine inverters cannot be setup remotely.

7 CHARGE PROGRAM EDITOR

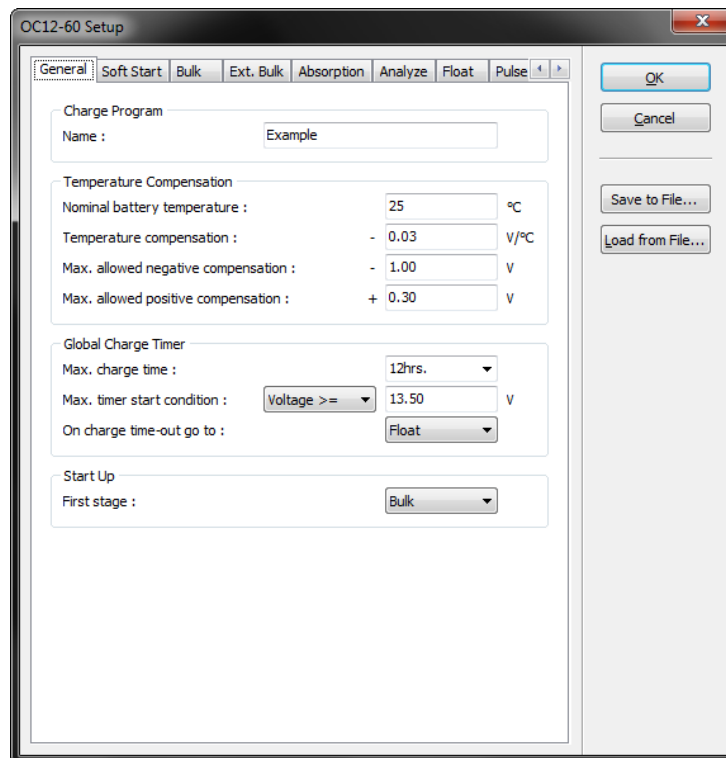
The Charge Program Editor can be launched in two ways. When it is desirable to create or modify a charge program off-line (no Omnicharge or Powersine Combi connected to Dashboard), you can use the Charge Program Editor Wizard which can be launched from the Tools menu. This wizard will ask a few questions before entering the Editor window. Another way to launch the Charge Program Editor is from the Omnicharge or Powersine Combi setup window (see chapter 5.2). This is only possible when a such a device is connected to Dashboard.

 CAUTION	The Charge Program Editor enables you to enter charge parameters that may exceed the maximum ratings of your batteries. Take extreme caution when editing charge parameters like absorption, float or equalize voltages. Entering wrong values can damage your batteries permanently or cause fire hazards. TBS Electronics BV is not responsible for any damage caused by incorrect charge program editing.
--	---

The Charge Program Editor allows you to create charge programs containing up to 10 different stages. These stages are named 'Soft Start', 'Bulk', 'Ext. Bulk', 'Absorption', 'Analyze', 'Float', 'Pulse', 'Equalize', 'Stop' and 'Error'. All stages can be configured independently using different tabs inside the Charge Program Editor window. The user can also decide which stage to skip or not. For overall charge program settings, a 'General' tab is available as well.

7.1 The General tab

The Charge Program Editor window will open on the General tab as shown below:



Pressing the Ok button will transfer the charge program to the device. Press Cancel to exit the Charge Program Editor without transferring the charge program.

When you wish to edit or create a charge program, but do not wish to transfer it yet to the device, press the *Save to File...* button to save the charge program for later use.

When you wish to open an earlier made charge program, press the *Open File...* button and select the desired file.

The following options and parameters can be edited:

Charge Program group

<Name>

Shows the name of the charge program that will be edited. The maximum length is 16 characters.

Temperature Compensation group

<Nominal battery temperature>

Shows the nominal battery temperature that will be used to calculate the correct temperature compensation voltage.

<Temperature compensation>

Shows the rate of change of charge voltage versus measured battery temperature.

<Max. allowed negative compensation>



Shows maximum allowed charge voltage reduction controlled by measured battery temperature.

<Max. allowed positive compensation>

Shows maximum allowed charge voltage rise controlled by measured battery temperature.

Global Charge Timer group

<Max. charge time>

Shows the maximum allowed overall duration of a complete charge cycle.

<Max. timer start condition>

Shows the condition at which the maximum charge timer will start.

<On charge time-out go to>

Shows to which stage the charge program will jump when the maximum charger timer has expired.

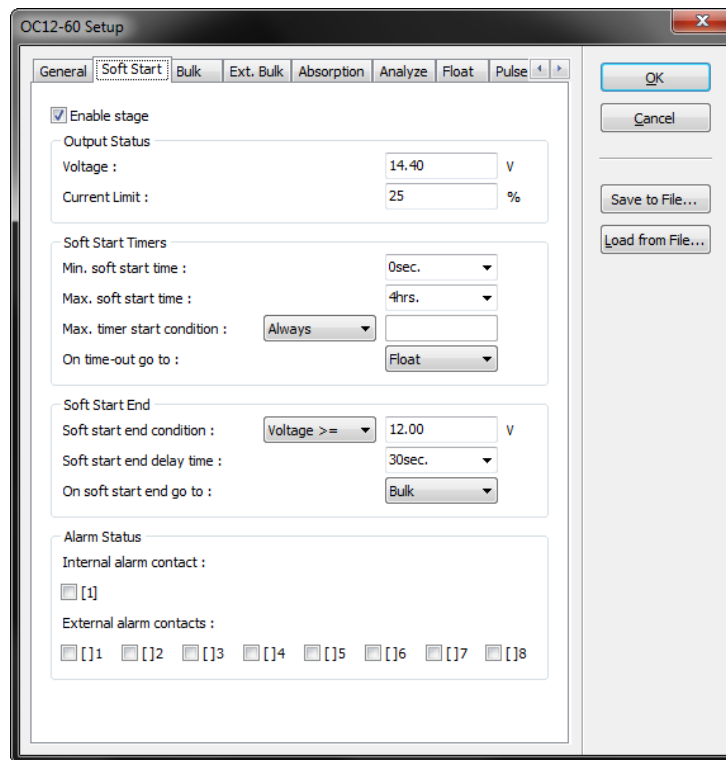
Start Up group

<First stage>

Shows the first stage at which the charge program will start when a new charge cycle is initiated.

7.2 The Soft Start tab

The Soft Start stage is disabled in the factory default Flooded, GEL and AGM charge programs, but can be enabled in your custom charge program if it is desirable to for example start the charge cycle with a lower charge current until a certain battery voltage level is reached. The Soft Start tab is shown below:



The following options and parameters can be edited:

<Enable stage>

When this option is checked, the soft start stage will be enabled in your charge program.

Output Status group

<Voltage>

Shows the charge voltage which will be applied to the battery under constant voltage charging conditions.

<Current Limit>

Shows the maximum charge current (%) that will be delivered to the battery under constant current conditions.

Soft Start Timers group

<Min. soft start time>

Shows the minimum allowed duration of the Soft Start stage.

<Max. soft start time>

Shows the maximum allowed duration of the Soft Start stage.

<Max. timer start condition>



Shows the condition at which the soft start timer will start.

<On time-out go to>

Shows the stage to jump to when the soft start timer has expired.

Soft Start End group

<Soft start end condition>

Shows the condition at which the Soft Start stage will end.

<Soft start end delay time>

Shows the time in which 'Soft start end condition' must be met, before the soft start stage is considered to be finished.

<On soft start end go to>

Shows the stage to jump to when the soft start end condition has been met.

Alarm Status group

<Internal alarm contact>

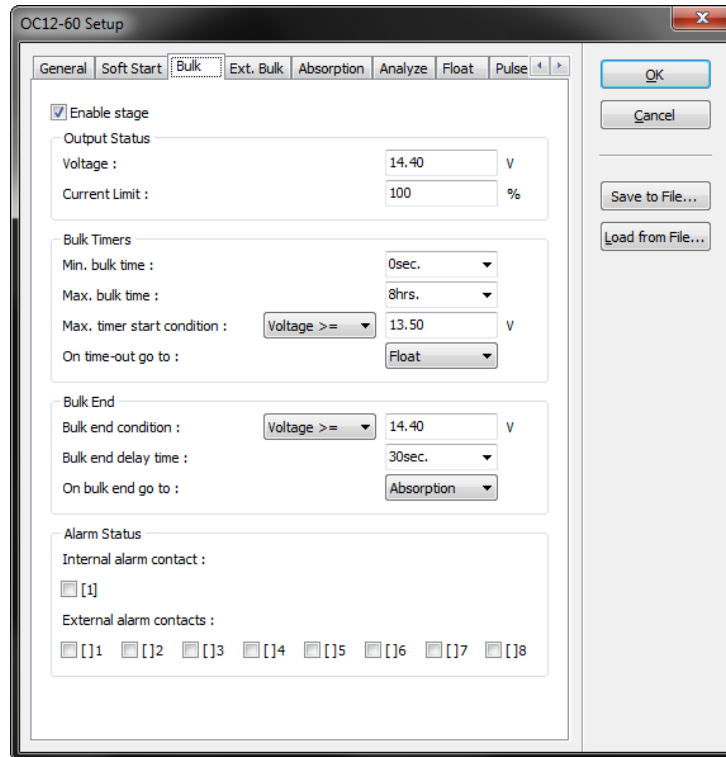
The Omnicharge has one internal alarm contact designated as '[1]'. When this option is checked, the internal alarm contact will be activated during the complete soft start stage.

<External alarm contacts>

The Omnicharge is capable to control up to eight external alarm contacts. With the optional Alarm Output Expander kit (art.# 5055630), three external alarm contacts are available ('[]1', '[]2' and '[]3'). Use this option to choose which external alarm contact will be activated during the complete soft start stage.

7.3 The Bulk tab

The Bulk stage is enabled in the factory default Flooded, GEL and AGM charge programs, but can be disabled in your custom charge program if desirable. The Bulk tab is shown below:



The following options and parameters can be edited:

<Enable stage>

When this option is checked, the bulk stage will be enabled in your charge program.

Output Status group

<Voltage>

Shows the charge voltage which will be applied to the battery under constant voltage charging conditions.

<Current Limit>

Shows the maximum charge current (%) that will be delivered to the battery under constant current conditions.

Bulk Timers group

<Min. bulk time>

Shows the minimum allowed duration of the bulk stage.

<Max. bulk time>

Shows the maximum allowed duration of the bulk stage.

<Max. timer start condition>



Shows the condition at which the bulk timer will start.

<On time-out go to>

Shows the stage to jump to when the bulk timer has expired.

Bulk End group

<Bulk end condition>

Shows the condition at which the bulk stage will end.

<Bulk end delay time>

Shows the time in which 'Bulk end condition' must be met, before the bulk stage is considered to be finished.

<On bulk end go to>

Shows the stage to jump to when the bulk end condition has been met.

Alarm Status group

<Internal alarm contact>

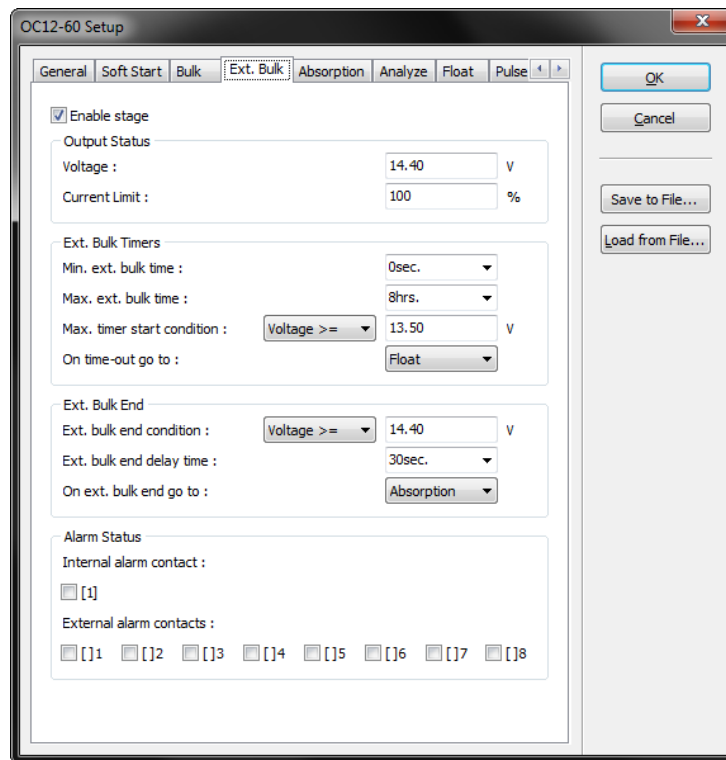
The Omnicharge has one internal alarm contact designated as '[1]'. When this option is checked, the internal alarm contact will be activated during the complete bulk stage.

<External alarm contacts>

The Omnicharge is capable to control up to eight external alarm contacts. With the optional Alarm Output Expander kit (art.# 5055630), three external alarm contacts are available ('[]1', '[]2' and '[]3'). Use this option to choose which external alarm contact will be activated during the complete bulk stage.

7.4 The Ext. Bulk tab

The Ext. Bulk (Extended Bulk-) stage is disabled in the factory default Flooded, GEL and AGM charge programs, but can be enabled in your custom charge program if it is for example desirable to split the Bulk stage into two, each charging at different end voltages or current limit levels. The Ext. Bulk tab is shown below:



The following options and parameters can be edited:

<Enable stage>

When this option is checked, the extended bulk stage will be enabled in your charge program.

Output Status group

<Voltage>

Shows the charge voltage which will be applied to the battery under constant voltage charging conditions.

<Current Limit>

Shows the maximum charge current (%) that will be delivered to the battery under constant current conditions.

Ext. Bulk Timers group

<Min. ext. bulk time>

Shows the minimum allowed duration of the extended bulk stage.

<Max. ext. bulk time>

Shows the maximum allowed duration of the extended bulk stage.

<Max. timer start condition>



Shows the condition at which the extended bulk timer will start.

<On time-out go to>

Shows the stage to jump to when the extended bulk timer has expired.

Ext. Bulk End group

<Ext. bulk end condition>

Shows the condition at which the extended bulk stage will end.

<Ext. Bulk end delay time>

Shows the time in which 'Ext. bulk end condition' must be met, before the extended bulk stage is considered to be finished.

<On ext. bulk end go to>

Shows the stage to jump to when the extended bulk end condition has been met.

Alarm Status group

<Internal alarm contact>

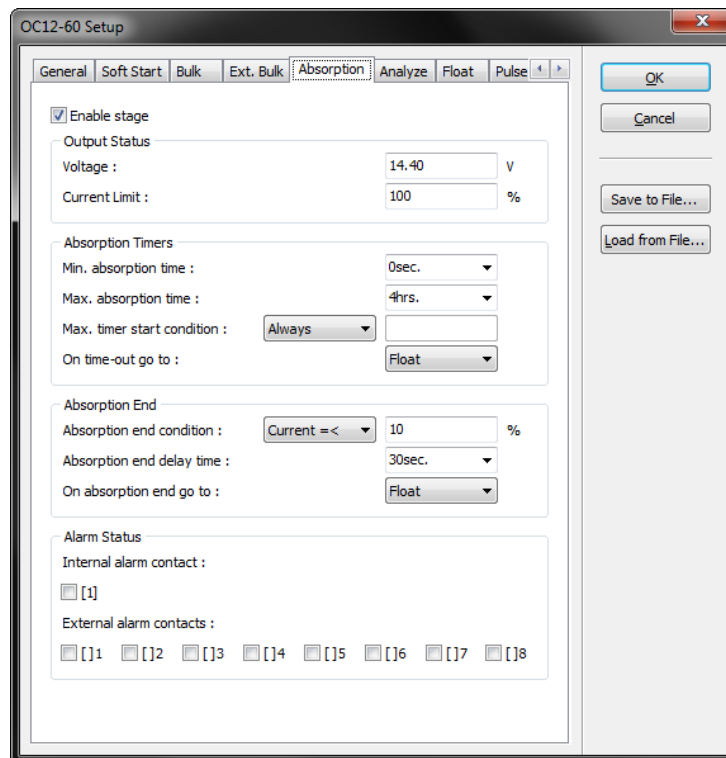
The Omnicharge has one internal alarm contact designated as '[1]'. When this option is checked, the internal alarm contact will be activated during the complete extended bulk stage.

<External alarm contacts>

The Omnicharge is capable to control up to eight external alarm contacts. With the optional Alarm Output Expander kit (art.# 5055630), three external alarm contacts are available ('[]1', '[]2' and '[]3'). Use this option to choose which external alarm contact will be activated during the complete extended bulk stage.

7.5 The Absorption tab

The absorption stage is enabled in the factory default Flooded, GEL and AGM charge programs, but can be disabled in your custom charge program if desirable. The Absorption tab is shown below:



The following options and parameters can be edited:

<Enable stage>

When this option is checked, the absorption stage will be enabled in your charge program.

Output Status group

<Voltage>

Shows the charge voltage which will be applied to the battery under constant voltage charging conditions.

<Current Limit>

Shows the maximum charge current (%) that will be delivered to the battery under constant current conditions.

Absorption Timers group

<Min. absorption time>

Shows the minimum allowed duration of the absorption stage.

<Max. absorption time>

Shows the maximum allowed duration of the absorption stage.

<Max. timer start condition>



Shows the condition at which the absorption timer will start.

<On time-out go to>

Shows the stage to jump to when the absorption timer has expired.

Absorption End group

<Absorption end condition>

Shows the condition at which the absorption stage will end.

<Absorption end delay time>

Shows the time in which 'Absorption end condition' must be met, before the absorption stage is considered to be finished.

<On absorption end go to>

Shows the stage to jump to when the absorption end condition has been met.

Alarm Status group

<Internal alarm contact>

The Omnicharge has one internal alarm contact designated as '[1]'. When this option is checked, the internal alarm contact will be activated during the complete absorption stage.

<External alarm contacts>

The Omnicharge is capable to control up to eight external alarm contacts. With the optional Alarm Output Expander kit (art.# 5055630), three external alarm contacts are available ('[]1', '[]2' and '[]3'). Use this option to choose which external alarm contact will be activated during the complete absorption stage.

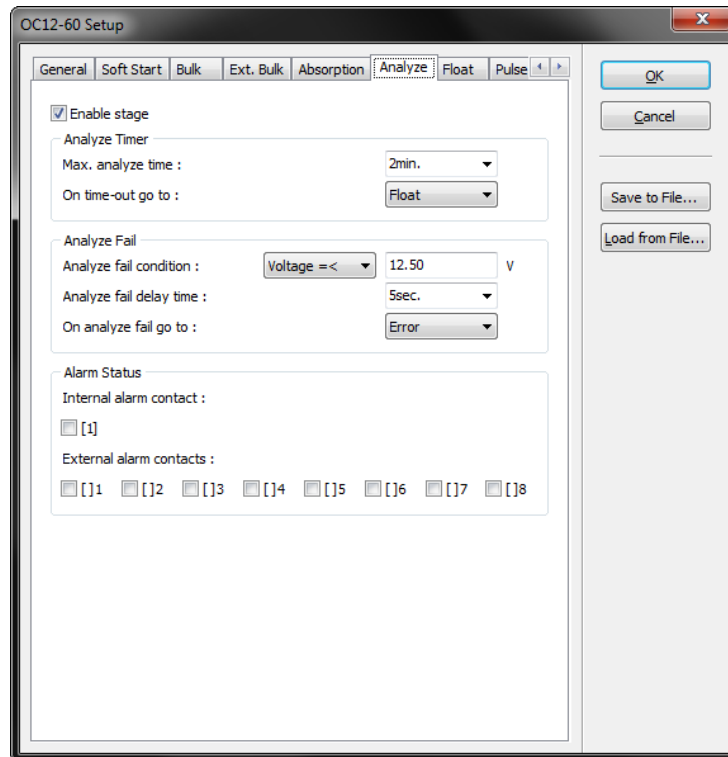
7.6 The Analyze tab

The analyze stage is disabled in the factory default Flooded, GEL and AGM charge programs, but can be enabled in your custom charge program if desirable. This stage can for example be used to check the voltage response of the battery, after a certain charge program stage has been applied to the battery.

The analyze stage will allow the battery voltage to drop, by disabling the charger's output and monitor if the battery voltage does not drop too deep within a certain amount of time. The Analyze Timer group is used for determining the timeframe wherein the voltage drop is monitored. The Analyze Fail group is used to detect if the battery voltage drops to deep.

In the example below, the analyze stage will take 2 minutes. If within this 2 minute timeframe the voltage is not lower than or equal to 12.5V for 5 seconds, the charger will jump to the float stage. If the voltage is lower than or equal to 12.5V for 5 seconds, the charger will jump to the error stage.

The Analyze tab is shown below:



The following options and parameters can be edited:

<Enable stage>

When this option is checked, the analyze stage will be enabled in your charge program.

Analyze Timer group

<Max. analyze time>

Shows the maximum duration of the analyze stage.

<On time-out go to>

Shows the stage to jump to when the 'Max. analyze time' has expired.

Analyze Fail group

<Analyze fail condition>

Shows the condition at which the analyze stage will fail.

<Analyze fail delay time>

Shows the time in which 'Analyze fail condition' must be met, before the analyze stage is considered to be failed.

<On analyze fail go to>

Shows the stage to jump to when the analyze fail condition has been met.

Alarm Status group

<Internal alarm contact>

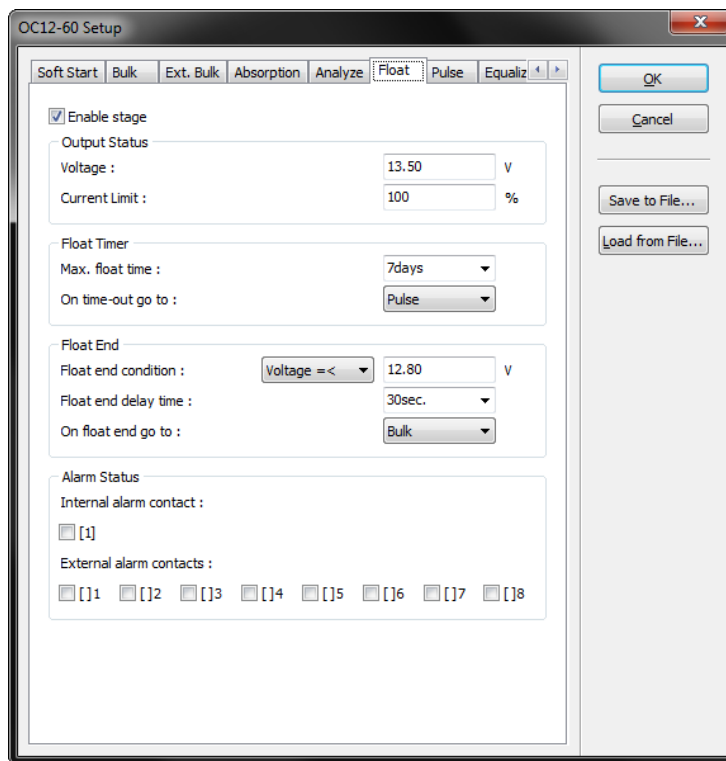
The Omnicarge has one internal alarm contact designated as '[1]'. When this option is checked, the internal alarm contact will be activated during the complete analyze stage.

<External alarm contacts>

The Omnicarge is capable to control up to eight external alarm contacts. With the optional Alarm Output Expander kit (art.# 5055630), three external alarm contacts are available ('[]1', '[]2' and '[]3'). Use this option to choose which external alarm contact will be activated during the complete analyze stage.

7.7 The Float tab

The Float stage is enabled in the factory default Flooded, GEL and AGM charge programs, but can be disabled in your custom charge program if desirable. The Float tab is shown below:



The following options and parameters can be edited:

<Enable stage>

When this option is checked, the float stage will be enabled in your charge program.

Output Status group



<Voltage>

Shows the charge voltage which will be applied to the battery under constant voltage charging conditions.

<Current Limit>

Shows the maximum charge current (%) that will be delivered to the battery under constant current conditions.

Float Timer group

<Max. float time>

Shows the maximum allowed duration of the float stage.

<On time-out go to>

Shows the stage to jump to when the float timer has expired.

Float End group

<Float end condition>

Shows the condition at which the float stage will end.

<Float end delay time>

Shows the time in which 'Float end condition' must be met, before the float stage is considered to be finished.

<On float end go to>

Shows the stage to jump to when the float end condition has been met.

Alarm Status group

<Internal alarm contact>

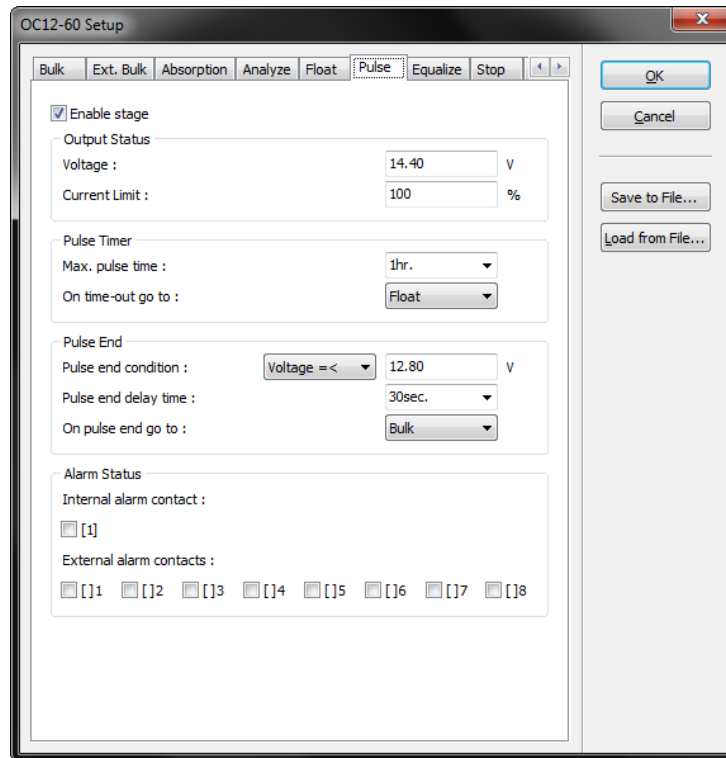
The Omnicharge has one internal alarm contact designated as '[1]'. When this option is checked, the internal alarm contact will be activated during the complete float stage.

<External alarm contacts>

The Omnicharge is capable to control up to eight external alarm contacts. With the optional Alarm Output Expander kit (art.# 5055630), three external alarm contacts are available ('[1]', '[2]' and '[3]'). Use this option to choose which external alarm contact will be activated during the complete float stage.

7.8 The Pulse tab

The Pulse stage is enabled in the factory default Flooded, GEL and AGM charge programs, but can be disabled in your custom charge program if desirable. This stage can be used to deliver a short ‘refresh’ charge to the battery when it is connected to the charger for an extended time. The Pulse tab is shown below:



The following options and parameters can be edited:

<Enable stage>

When this option is checked, the pulse stage will be enabled in your charge program.

Output Status group

<Voltage>

Shows the charge voltage which will be applied to the battery under constant voltage charging conditions.

<Current Limit>

Shows the maximum charge current (%) that will be delivered to the battery under constant current conditions.

Pulse Timer group

<Max.pulse time>

Shows the maximum allowed duration of the pulse stage.

<On time-out go to>



Shows the stage to jump to when the pulse timer has expired.

Pulse End group

<Pulse end condition>

Shows the condition at which the pulse stage will end.

<Pulse end delay time>

Shows the time in which 'Pulse end condition' must be met, before the pulse stage is considered to be finished.

<On pulse end go to>

Shows the stage to jump to when the pulse end condition has been met.

Alarm Status group

<Internal alarm contact>

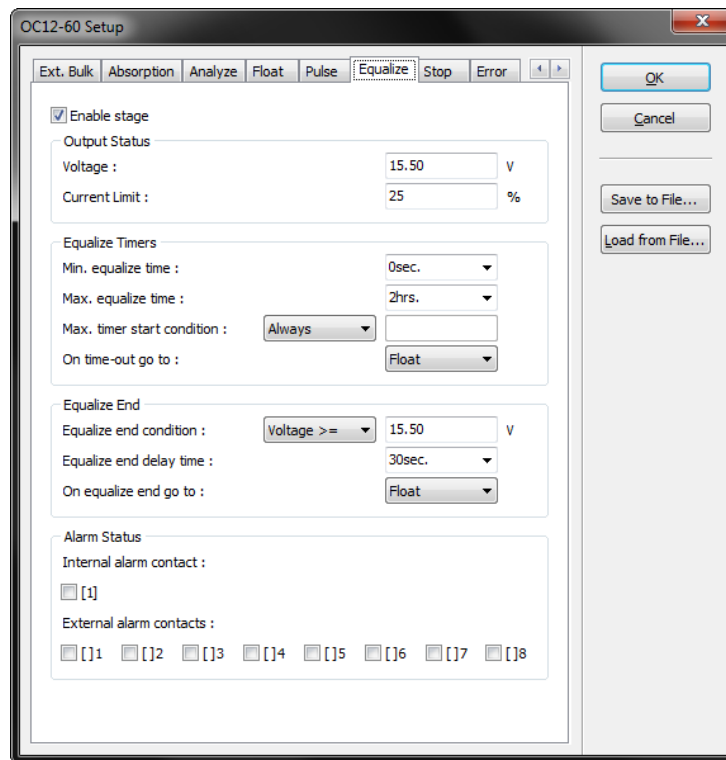
The Omnicharge has one internal alarm contact designated as '[1]'. When this option is checked, the internal alarm contact will be activated during the complete pulse stage.

<External alarm contacts>

The Omnicharge is capable to control up to eight external alarm contacts. With the optional Alarm Output Expander kit (art.# 5055630), three external alarm contacts are available ('[]1', '[]2' and '[]3'). Use this option to choose which external alarm contact will be activated during the complete pulse stage.

7.9 The Equalize tab

The Equalize stage is enabled in the factory default Flooded charge program and disabled in the factory default GEL and AGM charge programs. Please make sure that if you wish to enable this stage, you will only be charging battery types which are allowed to be equalized. Sealed batteries can explode when equalizing these! Enabling the equalize stage does not mean that the charger will automatically equalize your battery, but only that it will respond to pressing the equalize switch at the bottom side of your Omnicharge battery charger. The Equalize tab is shown below:



The following options and parameters can be edited:

<Enable stage>

When this option is checked, the equalize stage can be activated by pressing the recessed equalize switch at the bottom side of your Omniccharge battery charger. Please note that the equalize stage can only be activated when the charger is operating in the float or pulse stage.

Output Status group

<Voltage>

Shows the charge voltage which will be applied to the battery under constant voltage charging conditions.

<Current Limit>

Shows the maximum charge current (%) that will be delivered to the battery under constant current conditions.

Equalize Timers group

<Min. equalize time>

Shows the minimum allowed duration of the equalize stage.

<Max. equalize time>

Shows the maximum allowed duration of the equalize stage.



<Max. timer start condition>

Shows the condition at which the equalize timer will start.

<On time-out go to>

Shows the stage to jump to when the equalize timer has expired.

Equalize End group

<Equalize end condition>

Shows the condition at which the equalize stage will end.

<Equalize end delay time>

Shows the time in which 'Equalize end condition' must be met, before the equalize stage is considered to be finished.

<On equalize end go to>

Shows the stage to jump to when the equalize end condition has been met.

Alarm Status group

<Internal alarm contact>

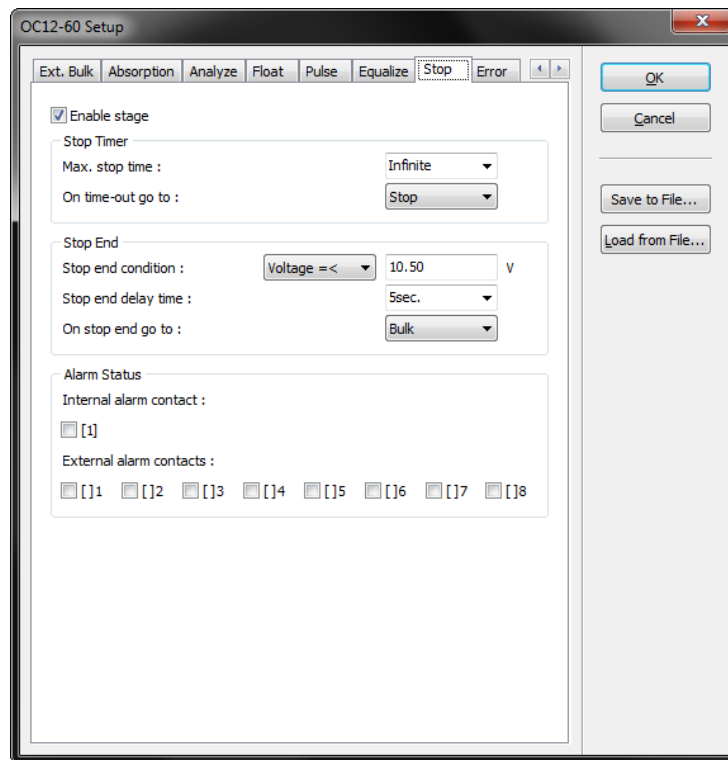
The Omnicharge has one internal alarm contact designated as '[1]'. When this option is checked, the internal alarm contact will be activated during the complete equalize stage.

<External alarm contacts>

The Omnicharge is capable to control up to eight external alarm contacts. With the optional Alarm Output Expander kit (art.# 5055630), three external alarm contacts are available ('[]1', '[]2' and '[]3'). Use this option to choose which external alarm contact will be activated during the complete equalize stage.

7.10 The Stop tab

The stop stage is disabled in the factory default Flooded, GEL and AGM charge programs, but can be enabled in your custom charge program if desirable. This stage can be used to stop the charge process after the absorption stage, instead of going to the float stage. In the error stage the charger output will be turned off. The Stop tab is shown below:



The following options and parameters can be edited:

<Enable stage>

When this option is checked, the stop stage will be enabled in your charge program.

Stop Timer group

<Max. stop time>

Shows the maximum duration of the stop stage.

<On time-out go to>

Shows the stage to jump to when the 'Max. stop time' has expired.

Stop End group

<Stop end condition>

Shows the condition at which the stop stage will end.

<Stop end delay time>

Shows the time in which 'Stop end condition' must be met, before the stop stage is considered to be finished.

<On stop end go to>

Shows the stage to jump to when the stop end condition has been met.

Alarm Status group

<Internal alarm contact>

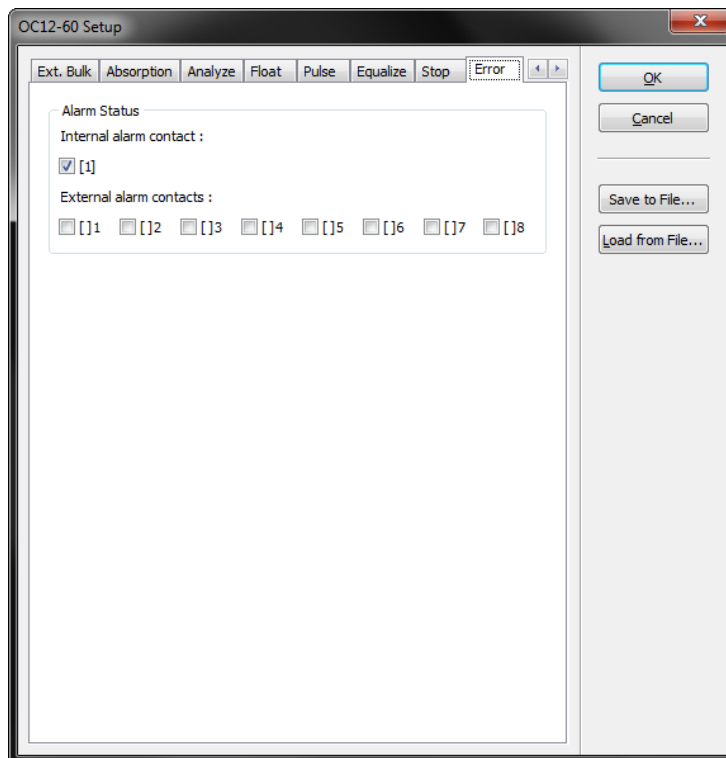
The Omnicharge has one internal alarm contact designated as '[1]'. When this option is checked, the internal alarm contact will be activated during the complete stop stage.

<External alarm contacts>

The Omnicharge is capable to control up to eight external alarm contacts. With the optional Alarm Output Expander kit (art.# 5055630), three external alarm contacts are available ('[1]', '[2]' and '[3]'). Use this option to choose which external alarm contact will be activated during the complete stop stage.

7.11 The Error tab

The error stage is not used in the factory default Flooded, GEL and AGM charge programs. If from one of the above mentioned stages you have enabled a jump to the error stage under certain conditions, you can use this tab to configure which alarm contact will be activated. In the error stage the charger output will be turned off completely. To restart the charger, the user needs to turn the power switch off and on again. The Error tab is shown below:



The following options can be edited:

Alarm Status group

<Internal alarm contact>



The Omnicharge has one internal alarm contact designated as '[1]'. When this option is checked, the internal alarm contact will be activated until the user manually resets the charger.

<External alarm contacts>

The Omnicharge is capable to control up to eight external alarm contacts. With the optional Alarm Output Expander kit (art.# 5055630), three external alarm contacts are available ('[]1', '[]2' and '[]3'). Use this option to choose which external alarm contact will be activated during the error stage.



8 END USER LICENSE AGREEMENT

IMPORTANT READ CAREFULLY

SOFTWARE PRODUCT here means Software, image files, all accompanying files, data and materials received with your order of Dashboard.

Please read the following terms and conditions carefully before using this SOFTWARE PRODUCT.

By clicking on the "I ACCEPT" button, by opening the package that contains the SOFTWARE PRODUCT, or by copying, downloading, accessing or otherwise using the SOFTWARE PRODUCT, you agree to be bound by the terms of this License and you represent that you are authorized to enter into this Agreement on behalf of your corporate entity (if applicable). If you do not agree to any of the terms of this License or do not wish to be bound by the terms of this License, click the "I DO NOT ACCEPT" button, and do not install, access, use or distribute the SOFTWARE PRODUCT. Your use, distribution or installation of this copy of this SOFTWARE PRODUCT indicates your acceptance of this License.

TBS Electronics BV is the owner of the copyright of this SOFTWARE PRODUCT. All of its derivatives, title and accompanying materials are the exclusive property of TBS Electronics BV. All rights of any kind, which are not expressly granted in this License, are entirely and exclusively reserved to and by TBS Electronics BV. You may not rent, lease, transfer, modify, translate, reverse engineer, de-compile, disassemble or create derivative works based on this SOFTWARE PRODUCT. You may not make access to SOFTWARE PRODUCT available to others in connection with a service bureau, application service provider, or similar business. There are no third party beneficiaries of any promises, obligations or representations made by TBS Electronics BV herein.

This SOFTWARE PRODUCT, all accompanying files, data and materials, are distributed "AS IS" and with no warranties of any kind, whether express or implied. The user must assume all risk of using the SOFTWARE PRODUCT. This disclaimer of warranty constitutes an essential part of the agreement.

Any liability of TBS Electronics BV will be limited exclusively to refund of purchase price. In addition, in no event shall TBS Electronics BV, or its principals, shareholders, officers, employees, affiliates, contractors, subsidiaries, or parent organizations, be liable for any incidental, consequential, punitive or any other damages (including, but not limited to, procurement of substitute goods or services; Loss of use, data, or profits, or business interruption) whatsoever relating to the use of SOFTWARE PRODUCT.

In addition, in no event does TBS Electronics BV authorize you to use this SOFTWARE PRODUCT in applications or systems where SOFTWARE PRODUCT 's failure to perform can reasonably be expected to result in a physical injury, or in loss of life. Any such use by you is entirely at your own risk, and you agree to hold TBS Electronics BV harmless from any claims or losses relating to such unauthorized use.

Warranty covers defects in the SOFTWARE PRODUCT, which prevents successfully installing the SOFTWARE PRODUCT on the buyer's computer provided that the buyer's computer meets the SOFTWARE PRODUCT's minimum system requirements. Warranty does not cover fitness of purpose, not meeting of expectations or needs in the mind of the



buyer.

This SOFTWARE PRODUCT is for personal use only and may be installed and used by on only one computer. Its component parts may not be separated for use on more than one computer. SOFTWARE PRODUCT may be accessed through a network only after obtaining a site license. All components accompanying the software are copyrighted by TBS Electronics BV and may not be taken apart, modified, used or published with other software or means except with the SOFTWARE PRODUCT software and may not be distributed or copied in any manner.

You may not disclose to other persons the data or techniques relating to this SOFTWARE PRODUCT that you know or should know that it is a trade secret of TBS Electronics BV in any manner that will cause damage to TBS Electronics BV.

This SOFTWARE PRODUCT and all services provided may be used for lawful purposes only. Transmission, storage, or presentation of any information, data or material in violation of the buyer's Country, State or City law is strictly prohibited. This includes, but is not limited to: Copyrighted material, material we judge to be threatening or obscene, or material protected by trade secret and other statute. You agree to indemnify and hold TBS Electronics BV harmless from any claims resulting from the use of this SOFTWARE PRODUCT, which may damage any other party.

This Agreement constitutes the entire statement of the Agreement between the parties on the subject matter, and merges and supersedes all other or prior understandings, purchase orders, agreements and arrangements. This Agreement shall be governed by the laws of The Netherlands.